

2026

BEST SELLERS



TABLE COVERS

28 Stock Throw Colors

WHITE *	CHERRY * PMS 1795	GRAPE PMS 268	NAVY BLUE * PMS 2767	BROWN PMS 476
LEMON *	RED PMS 201	PURPLE PMS VIOLET	LIME GREEN PMS 375	GRAY PMS 422
YELLOW PMS 1235	BURGUNDY PMS 504	AQUAMARINE PMS 2231	EMERALD * PMS 347	CHARCOAL PMS 425
MANGO PMS 1375	FLAMINGO PMS 1767	COBALT * PMS 7683	SHAMROCK PMS 361	BLACK *
ORANGE PMS 1505	HOT PINK PMS 219	BLUEBERRY PMS 647	HUNTER GREEN PMS 350	
PEACH PMS 162	MULBERRY PMS 683	ROYAL BLUE PMS 661	HAZELNUT PMS 7575	

PMS colors are for reference only and may vary slightly from actual color.
* indicates stock throw colors that closely align with our stock tent canopy colors.

when choosing a table throw
have you considered...

- How often will you be using your table cover?
- Does your throw need to cover all four sides of the table, or would you like an open back?
- Do you want a logo printed on the front, or would you like a full-color design that covers the entire throw?



LAZERLINE TABLE THROW



These cost-effective throws are laser-cut for a crisp finished edge.

- Available in full-color front only and full-color full-bleed
- Full-color front only features a large imprint area
- Heat-treated edges will not fray or unravel
- Available in 3-sided or 4-sided throw styles
- Polyester poplin
- Machine-washable and wrinkle-resistant
- Flame retardant certified for exhibit hall use

Full-Color Front Only

Item #	Description	1	2-5	6-11	12-24
108213	6' LazerLine 3-Sided Throw	192.57	184.96	175.27	165.59
108214	8' LazerLine 3-Sided Throw	213.72	205.23	194.50	183.76
108201	6' LazerLine 4-Sided Throw	213.72	205.23	194.50	183.76
108202	8' LazerLine 4-Sided Throw	234.89	225.49	213.72	201.95

Setup fee: \$29.81(G)

Pricing includes brokerage and duties.

Stock fabric colors with full-color artwork printed on front.
Artwork cannot exceed maximum size requirements.

CAD MSRP (C)

Full-Color Full-Bleed

Item #	Description	1	2-5	6-11	12-24
108216	6' LazerLine 3-Sided Throw	192.57	184.96	175.27	165.59
108217	8' LazerLine 3-Sided Throw	213.72	205.23	194.50	183.76
108204	6' LazerLine 4-Sided Throw	213.72	205.23	194.50	183.76
108205	8' LazerLine 4-Sided Throw	234.89	225.49	213.72	201.95

Setup fee: \$29.81(G)

Pricing includes brokerage and duties.

White fabric fully dye sublimated with full-color artwork.

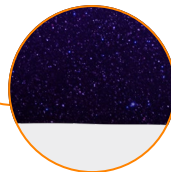
CAD MSRP (C)

Description	Table Size	Finished Graphic Size	Product Wt. (3-Sided / 4-Sided)
6'	standard 6'W table	view online template	2 lbs. / 2.5 lbs.
8'	standard 8'W table	view online template	2.5 lbs. / 3 lbs.

Production Lead Time: 2 days from final proof approval



6' full-color full-bleed



Laser-cut edges for a clean look.

USER-FRIENDLY ICONS



Machine-Washable

This product's graphic is machine-washable on gentle cycle using mild detergent.



Outdoor Use

This product is suitable for outdoor use during mild weather conditions.



Made in the USA

This product is manufactured in the USA.



Product Warranty

This is the duration of the product warranty (see website for details).



Sustainable Product

One or more materials with a reduced environmental impact. Check your local recycling guidelines.



Wind Rating

Rated on the Beaufort Wind Rating. Wind ratings were determined utilizing all available securing/stabilizing options sold with or offered for the product.

PRICES SHOWN IN CAD AND ARE SUBJECT TO CHANGE.

Pricing accounts for brokerage and duties. 10% Flat Shipping Rate is applied at checkout. No setup fee on orders placed via our website. Visit our website for current pricing.



ECONOMY TABLE THROW



The open-back design of this throw gives you legroom and quick access to anything you store beneath the table.

- Available in full-color front only and full-color full-bleed
- Full-color front only features a large imprint area
- Draped corners
- Polyester poplin
- Machine-washable and wrinkle-resistant
- Flame retardant certified for exhibit hall use

Full-Color Front Only

Item #	Description	1	2-5	6-11	12-24
106002	6' Economy Throw	258.58	248.15	235.33	222.37
106014	8' Economy Throw	287.05	275.57	261.26	246.81

Setup fee: \$29.81(G) Pricing includes brokerage and duties.

Stock fabric colors with full-color artwork printed on front. CAD MSRP (C)
Artwork cannot exceed maximum size requirements.

Full-Color Full-Bleed

Item #	Description	1	2-5	6-11	12-24
106010	6' Economy Throw	258.58	248.15	235.33	222.37
106022	8' Economy Throw	287.05	275.57	261.26	246.81

Setup fee: \$29.81(G) Pricing includes brokerage and duties.

White fabric fully dye sublimated with full-color artwork. CAD MSRP (C)

Description	Table Size	Finished Graphic Size	Product Wt.
6'	standard 6'W table	view online template	2 lbs.
8'	standard 8'W table	view online template	2.5 lbs.

Production Lead Time: 2 days from final proof approval



8' full-color front only shown in gray

6' full-color full-bleed



Covers three sides of the table with a 9" overhang in back.



Underside of material is blank.

STANDARD TABLE THROW



Our most popular table throw is elegant in its simplicity.

- Covers four sides of the table, viewable from all sides
- Available in full-color front only and full-color full-bleed
- Full-color front only features a large imprint area
- Draped corners
- Polyester poplin
- Machine-washable and wrinkle-resistant
- Flame retardant certified for exhibit hall use

Full-Color Front Only

Item #	Description	1	2-5	6-11	12-24
109002	6' Standard Throw	287.05	275.57	261.26	246.81
109014	8' Standard Throw	315.22	302.70	286.90	271.10

Setup fee: \$29.81(G) Pricing includes brokerage and duties.

Stock fabric colors with full-color artwork printed on front. CAD MSRP (C)
Artwork cannot exceed maximum size requirements.

Full-Color Full-Bleed

Item #	Description	1	2-5	6-11	12-24
109010	6' Standard Throw	287.05	275.57	261.26	246.81
109022	8' Standard Throw	315.22	302.70	286.90	271.10

Setup fee: \$29.81(G) Pricing includes brokerage and duties.

White fabric fully dye sublimated with full-color artwork. CAD MSRP (C)

Description	Table Size	Finished Graphic Size	Product Wt.
6'	standard 6'W table	view online template	2.5 lbs.
8'	standard 8'W table	view online template	3 lbs.

Production Lead Time: 2 days from final proof approval



8' full-color full-bleed

6' full-color front only shown in royal blue



Keep your supplies and accessories out of sight.



Add-On

Table Throw Messenger Bag

Item #	1	2-5	6-11	12-24
220107	69.37	67.29	65.22	63.14

Pricing includes brokerage and duties.

CAD MSRP (C)

Hardware Lead Time: Ships same day when ordered before 2 p.m. Central

PRICES SHOWN IN CAD AND ARE SUBJECT TO CHANGE.
Pricing accounts for brokerage and duties. 10% Flat Shipping Rate is applied at checkout.
No setup fee on orders placed via our website. Visit our website for current pricing.



TABLE COVERS



8' full-color full-bleed transforms into a 6' fitted



Hook-and-loop fasteners make size conversion quick and easy; available in black or white (see website for details).



Converts from 8' to 6' and Back Again!



1. Grab the back corner of the table throw.



2. Attach the corner of the throw using the built-in hook-and-loop fasteners.



3. Grab the front corner of the throw and fold it tightly around the back corner of the table.



4. Secure it in place with the built-in hook-and-loop fasteners.

CONVERTIBLE TABLE THROW



This throw is convertible so it fits both 8' and 6' table sizes.

- Available in full-color front only and full-color full-bleed
- Full-color front only features a large imprint area
- Covers four sides of the table
- Polyester poplin
- Machine-washable and wrinkle-resistant
- Flame retardant certified for exhibit hall use

Full-Color Front Only

Item #	Description	1	2-5	6-11	12-24
104014	6'/8' Convertible Throw	482.89	419.92	396.07	362.17

Setup fee: **\$29.81(G)**

Pricing includes brokerage and duties.

Stock fabric colors with full-color artwork printed on front. Artwork cannot exceed maximum size requirements.

CAD MSRP (C)

Full-Color Full-Bleed

Item #	Description	1	2-5	6-11	12-24
104022	6'/8' Convertible Throw	482.89	419.92	396.07	362.17

Setup fee: **\$29.81(G)**

Pricing includes brokerage and duties.

White fabric fully dye sublimated with full-color artwork.

CAD MSRP (C)

Table Size	Finished Graphic Size	Product Wt.
standard 6' or 8'W table	view online template	3 lbs.

Production Lead Time: 2 days from final proof approval

FITTED TABLE THROW



It's taut surfaces and sharp lines give it a tailored look that stands out at meetings, shows, career fairs and more.

- Tight, fitted look
- Available in full-color front only and full-color full-bleed
- Full-color front only features a large imprint area
- Covers four sides of the table
- Polyester poplin
- Machine-washable and wrinkle-resistant
- Flame retardant certified for exhibit hall use

Full-Color Front Only

Item #	Description	1	2-5	6-11	12-24
107002	6' Fitted Throw	420.29	365.74	344.72	315.22
107014	8' Fitted Throw	458.30	398.68	375.95	343.84

Setup fee: **\$29.81(G)**

Pricing includes brokerage and duties.

Stock fabric colors with full-color artwork printed on front. Artwork cannot exceed maximum size requirements.

CAD MSRP (C)

Full-Color Full-Bleed

Item #	Description	1	2-5	6-11	12-24
107010	6' Fitted Throw	420.29	365.74	344.72	315.22
107022	8' Fitted Throw	458.30	398.68	375.95	343.84

Setup fee: **\$29.81(G)**

Pricing includes brokerage and duties.

White fabric fully dye sublimated with full-color artwork.

CAD MSRP (C)

Description	Table Size	Finished Graphic Size	Product Wt.
6'	standard 6'W table	view online template	2 lbs.
8'	standard 8'W table	view online template	2.5 lbs.

Production Lead Time: 3 days from final proof approval



8' full-color full-bleed

6' full-color front only shown in gray



PRICES SHOWN IN CAD AND ARE SUBJECT TO CHANGE.

Pricing accounts for brokerage and duties. 10% Flat Shipping Rate is applied at checkout. No setup fee on orders placed via our website. Visit our website for current pricing.



ULTRAFIT TABLE THROW



This form-fitting throw is an attractive option for promoting your brand. It stretches to fit tightly around tables, creating a crisp, refined appearance.

- Tight, form-fitting look
- Artwork is dye sublimated on two-way stretch fabric
- Machine-washable and wrinkle-resistant
- Flame retardant certified for exhibit hall use

UltraFit Table Throw

Item #	Description	1	2-5	6-11	12-24
114012	31.5" Bar-Height Full-Color Full-Bleed	526.86	505.62	479.16	453.08
114002	6' Classic Full-Color Full-Bleed	607.71	583.49	552.94	522.76
114005	8' Classic Full-Color Full-Bleed	674.78	647.95	614.04	580.51
114015	6' Curve Full-Color Full-Bleed	575.67	552.94	523.88	495.19
114018	8' Curve Full-Color Full-Bleed	639.01	613.67	581.63	549.58

Setup fee: \$29.81(G)

Pricing includes brokerage and duties.

White fabric fully dye sublimated with full-color artwork.

CAD MSRP (C)

Description	Table Size	Finished Graphic Size	Product Wt.
31.5"	31.5"D bar-height table	view online template	1.75 lbs.
6'	standard 6'W table	view online template	2.25 - 2.5 lbs.
8'	standard 8'W table	view online template	2.75 - 3 lbs.

Production Lead Time: 4 days from final proof approval



Classic features a zippered back for an enclosed storage area.



Table leg slips into the sleeve to pull the throw taut.



back view

6' Curve

6' Classic

31.5" Bar-height

STANDARD TABLE RUNNER



This stylish runner lets you add a logo or design to any table.

- Available in full-color front only and full-color full-bleed
- Full-color front only features a large imprint area
- Available in two widths
- Polyester poplin
- Machine-washable and wrinkle-resistant
- Flame retardant certified for exhibit hall use
- Table throw sold separately

Full-Color Front Only

Item #	Description	1	2-5	6-11	12-24
102002	28" Standard Runner	248.15	215.80	203.44	186.00
102014	57" Standard Runner	306.72	266.93	251.57	230.12

Setup fee: \$29.81(G)

Pricing includes brokerage and duties.

Stock fabric colors with full-color artwork printed on front. Artwork cannot exceed maximum size requirements.

CAD MSRP (C)

Full-Color Full-Bleed

Item #	Description	1	2-5	6-11	12-24
102010	28" Standard Runner	248.15	215.80	203.44	186.00
102022	57" Standard Runner	306.72	266.93	251.57	230.12

Setup fee: \$29.81(G)

Pricing includes brokerage and duties.

White fabric fully dye sublimated with full-color artwork.

CAD MSRP (C)

Description	Finished Size	Finished Graphic Size	Product Wt.
28"	28"W x 80"D	view online template	0.5 lb.
57"	57"W x 80"D	view online template	1 lb.

Production Lead Time: 2 days from final proof approval



57" full-color front only shown in mango

28" full-color full-bleed



PRICES SHOWN IN CAD AND ARE SUBJECT TO CHANGE.
Pricing accounts for brokerage and duties. 10% Flat Shipping Rate is applied at checkout. No setup fee on orders placed via our website. Visit our website for current pricing.



RETRACTABLE BANNERS

when choosing a retractable banner have you considered...

- Will your graphic be permanent, or will you be swapping it out frequently?
- How often will your retractor be set up and taken down?
- Do you want a single- or double-sided display?

IDEAL RETRACTOR



The Ideal Retractor is designed from the ground up to be a quick, simple solution for short-term promotional applications.

- Lightweight, portable base
- Artwork is printed on tear-resistant Titan™ polypropylene media
- Not eligible for Rush Service

Ideal Retractor

Item #	Description	1	2-5	6-11	12-24
261150	31.5" Kit	225.35	211.79	202.85	189.28
261153	33.5" Kit	247.10	232.35	222.37	207.61

Setup fee: \$29.81(G)

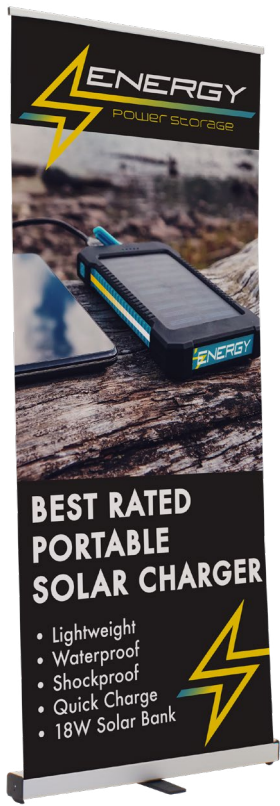
Pricing includes brokerage and duties.

Kit Includes: Hardware, Installed Graphic and Soft Carry Case

CAD MSRP (C)

Description	Product Size	Finished Graphic Size	Product Wt.	Media
31.5"	32.25"W x 82.25"H x 10.25"D	view online template	4.6 lbs.	Titan™ polypropylene media
33.5"	34.25"W x 82.25"H x 10.25"D	view online template	5 lbs.	Titan™ polypropylene media

Production Lead Time: 1 day from final proof approval



33.5"



31.5"



Plastic swivel foot for stability.



Banner rail easily attaches to the top of the pole for quick setup.



Three-section shock cord pole makes setup and teardown easy.



Lightweight aluminum base features plastic ends.



36"

33.5"

31.5"

VALUE RETRACTOR



The Value Retractor is a cost-conscious option for your portable signage needs.

- Banner available in Titan™ polypropylene media
- Two swivel feet for stability
- Available in three widths

Value Retractor

Item #	Description	1	2-5	6-11	12-24
262240	31.5" Kit	275.42	264.39	250.69	236.97
262243	33.5" Kit	288.99	277.37	262.90	248.46
262246	36" Kit	293.02	281.24	266.63	251.88

Setup fee: \$29.81(G)

Pricing includes brokerage and duties.

Kit Includes: Hardware, Installed Graphic and Soft Carry Case

CAD MSRP (C)

Description	Product Size	Finished Graphic Size	Product Wt.	Media
31.5"	34"W x 82"H x 15"D	view online template	7 lbs.	Titan™ polypropylene media
33.5"	35.75"W x 82"H x 15"D	view online template	7.25 lbs.	Titan™ polypropylene media
36"	38.5"W x 82"H x 15"D	view online template	7.6 lbs.	Titan™ polypropylene media

Production Lead Time: 2 days from final proof approval



Shock cord pole makes setup and teardown easy.



Lightweight aluminum base with plastic ends.

PRICES SHOWN IN CAD AND ARE SUBJECT TO CHANGE.

Pricing accounts for brokerage and duties. 10% Flat Shipping Rate is applied at checkout. No setup fee on orders placed via our website. Visit our website for current pricing.



ECONOMY RETRACTOR



The popular Economy Retractor is versatile and budget-friendly, making it a great option for the cost-conscious marketer.

- Banner available in Titan™ no-curl hybrid media, Titan™ no-curl opaque fabric or PVC-free silver backed media

Economy Retractor

Item #	Description	1	2-5	6-11	12-24
261134	31.5" No-Curl Hybrid Media Kit	432.59	415.08	393.47	372.01
262162	31.5" No-Curl Opaque Fabric Kit	432.59	415.08	393.47	372.01
261364	31.5" PVC-Free Silver Backed Media Kit	432.59	415.08	393.47	372.01
261136	33.5" No-Curl Hybrid Media Kit	448.24	430.35	407.62	385.27
262163	33.5" No-Curl Opaque Fabric Kit	448.24	430.35	407.62	385.27
261366	33.5" PVC-Free Silver Backed Media Kit	448.24	430.35	407.62	385.27
261138	36" No-Curl Hybrid Media Kit	500.40	480.65	455.32	430.35
262164	36" No-Curl Opaque Fabric Kit	500.40	480.65	455.32	430.35
261368	36" PVC-Free Silver Backed Media Kit	500.40	480.65	455.32	430.35

Setup fee: \$29.81(G)

Pricing includes brokerage and duties.

Kit Includes: Silver or Black Hardware, Installed Graphic and Soft Carry Case

CAD MSRP (C)

Description	Product Size	Finished Graphic Size	Product Wt.
31.5"	32"W x 83.5"H x 15"D	view online template	7 lbs.
33.5"	34"W x 83.5"H x 15"D	view online template	7.25 lbs.
36"	36.5"W x 83.5"H x 15"D	view online template	8.5 lbs.

Production Lead Time: 2 days from final proof approval

Add-On



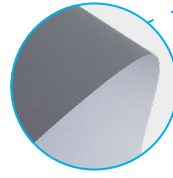
Ultimate LED Single Light Kit

Item #	Description	1	2-5	6-11	12-24
150120	Kit	297.33	288.39	279.45	270.51

Pricing includes brokerage and duties.

CAD MSRP (C)

Hardware Lead Time: Ships same day when ordered before 2 p.m. Central



Our sustainable display option uses PVC-free media and includes the recyclable aluminum base.



31.5" with single light kit (sold separately)



Lightweight, aluminum base is available in silver or black.



Two swivel feet for stability.



Banner rail easily attaches to the top of the pole for quick setup.

ECONOMY PLUS RETRACTOR



This display elevates our popular Economy Retractor with improved durability and additional features.

- Available in two widths
- Single-footed design keeps the retractor stable while maintaining a low profile
- Flip-lever telescoping pole makes setup and adjustment simple
- Banner available in Titan™ no-curl hybrid media or dry-erase media

Economy Plus Retractor

Item #	Description	1	2-5	6-11	12-24
261012	31.5" No-Curl Hybrid Media Kit	539.15	507.11	485.50	453.08
262191	31.5" Dry-Erase Media Kit	539.15	507.11	485.50	453.08
261002	33.5" No-Curl Hybrid Media Kit	567.84	533.56	510.83	476.93
262192	33.5" Dry-Erase Media Kit	567.84	533.56	510.83	476.93

Setup fee: \$29.81(G)

Pricing includes brokerage and duties.

Kit Includes: Hardware, Installed Graphic and Soft Carry Case

CAD MSRP (C)

Description	Product Size	Finished Graphic Size	Product Wt.
31.5"	32"W x 64"-82.5"H x 15"D	view online template	7 lbs.
33.5"	34"W x 64"-82.5"H x 15"D	view online template	7.5 lbs.

Production Lead Time: 2 days from final proof approval



Dry-erase media lets you write out your message and wipe it away (markers not included).



Hook-and-loop fasteners make banners easy to swap out.



31.5"

33.5"

PRICES SHOWN IN CAD AND ARE SUBJECT TO CHANGE.

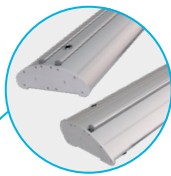
Pricing accounts for brokerage and duties. 10% Flat Shipping Rate is applied at checkout. No setup fee on orders placed via our website. Visit our website for current pricing.



RETRACTABLE BANNERS



Dry-erase media lets you write out your message and wipe it away (markers not included).



Streamlined base is available in single- and double-banner options.

DELUXE PRO RETRACTOR



This retractor features a curved base with durable aluminum end caps. Easily swapping out graphics with the hook-and-loop banner system.

- Banner available in Titan™ no-curl opaque fabric or dry-erase media
- Banner is printed single-sided; double-sided option includes two banners
- No-curl opaque fabric is not eligible for Rush Service

Deluxe Pro Retractor

Item #	Description	1	2-5	6-11	12-24
262250	33.5" Single No-Curl Opaque Fabric Kit	587.22	552.19	528.72	493.32
262251	33.5" Single No-Curl Opaque Fabric Kit	887.53	865.18	795.13	772.77
262202	33.5" Single Dry-Erase Media Kit	587.22	552.19	528.72	493.32
262203	33.5" Double Dry-Erase Media Kit	887.53	865.18	795.13	772.77
262254	46.5" Single No-Curl Opaque Fabric Kit	786.93	739.98	708.69	661.36
262255	46.5" Double No-Curl Opaque Fabric Kit	1161.77	1130.47	1041.79	1009.75
262204	46.5" Single Dry-Erase Media Kit	786.93	739.98	708.69	661.36
262205	46.5" Double Dry-Erase Media Kit	1161.77	1130.47	1041.79	1009.75

Setup fee: \$29.81(G)

Kit Includes: Hardware, Installed Graphic(s) and Soft Carry Case

Pricing includes brokerage and duties.

CAD MSRP (C)

Description	Product Size (Single / Double)	Finished Graphic Size	Product Wt. (Single / Double)
33.5"	34.75"W x 65.25"-83.25"H x 8.5"D / 9.25"D	view online template	12.25 lbs. / 16 lbs.
46.5"	48.5"W x 65.25"-83.25"H x 8.5"D / 9.25"D	view online template	16.75 lbs. / 22.5 lbs.

Production Lead Time: 1 day for no-curl opaque fabric / 2 days for dry-erase media from final proof approval



Flip-lever telescoping pole makes setup and adjustment simple.



Hook-and-loop fasteners make banners easy to swap out.

STRATUS RETRACTOR



This footless base features a low center of gravity to keep it stable.

- Banner available in Titan™ no-curl hybrid media, Titan™ no-curl opaque fabric or PVC-free silver backed media

Stratus Retractor

Item #	Description	1	2-5	6-11	12-24
262072	31.5" No-Curl Hybrid Media Kit	585.35	550.33	526.86	491.83
262151	31.5" No-Curl Opaque Fabric Kit	585.35	550.33	526.86	491.83
261461	31.5" PVC-Free Silver Backed Media Kit	585.35	550.33	526.86	491.83
262074	33.5" No-Curl Hybrid Media Kit	607.71	571.57	546.98	510.46
262152	33.5" No-Curl Opaque Fabric Kit	607.71	571.57	546.98	510.46
261462	33.5" PVC-Free Silver Backed Media Kit	607.71	571.57	546.98	510.46
262076	36" No-Curl Hybrid Media Kit	646.46	607.71	581.63	542.88
262153	36" No-Curl Opaque Fabric Kit	646.46	607.71	581.63	542.88
261463	36" PVC-Free Silver Backed Media Kit	646.46	607.71	581.63	542.88

Setup fee: \$29.81(G)

Kit Includes: Hardware, Installed Graphic and Soft Carry Case

Pricing includes brokerage and duties.

CAD MSRP (C)

Description	Product Size	Finished Graphic Size	Product Wt.
31.5"	33"W x 67.5"-81.625"H x 7.125"D	view online template	11.25 lbs.
33.5"	34.25"W x 67.5"-81.625"H x 7.125"D	view online template	12 lbs.
36"	37.25"W x 67.5"-81.625"H x 7.125"D	view online template	12.5 lbs.

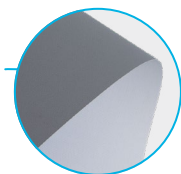
Production Lead Time: 2 days from final proof approval



Hook-and-loop fasteners make banners easy to swap out.



Shock cord pole with telescoping flip-lever extension makes setup and adjustment simple.



Our sustainable display option uses PVC-free media and includes the recyclable aluminum base.



Durable, lightweight aluminum base features chrome end caps.

PRICES SHOWN IN CAD AND ARE SUBJECT TO CHANGE.

Pricing accounts for brokerage and duties. 10% Flat Shipping Rate is applied at checkout. No setup fee on orders placed via our website. Visit our website for current pricing.



EUROFIT™ BANNER DISPLAY



A fabric graphic cover slides over a tubed frame, letting you create amazing backdrops or portable privacy walls.

- Multiple sizes can be arranged together for endless display possibilities
- Artwork is dye sublimated on recycled polyester knit
- Double-sided graphic cover is viewable from both the front and back of the display
- Steel base with a black, powder-coated finish
- Not compatible with EuroFit™ Connector or EuroFit™ Cascade Merchandiser kits

EuroFit™ Banner Display

Item #	Description	1	2-5	6-11	12-24
255110	2' Kit	472.46	458.30	444.14	429.98
255113	3' Kit	648.32	628.95	609.57	590.20

Setup fee: \$29.81(G)

Pricing includes brokerage and duties.

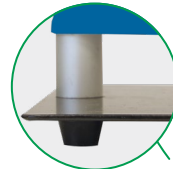
Kit Includes: Hardware, Graphic Cover and Soft Carry Case

CAD MSRP (C)

Description	Product Size	Finished Graphic Size	Product Wt.	Media
2'	25.75"W x 91"H x 10"D	view online template	15.5 lbs.	recycled polyester knit
3'	37.75"W x 91"H x 10"D	view online template	20.5 lbs.	recycled polyester knit

Production Lead Time: 4 days from final proof approval

Sustainable recycled polyester knit is made with fibers recycled from plastic bottles.



Plastic feet elevate the base and keep the display stable.



2'

3'

Add-Ons

EuroFit™ Light Clamp

Item #	Description	1	2-5	6-11	12-24
255125	Light Clamp	11.26	10.93	10.60	10.25

Pricing includes brokerage and duties.

CAD MSRP (C)

Ultimate LED Single Light Kit

Item #	Description	1	2-5	6-11	12-24
150120	Kit	297.33	288.39	279.45	270.51

Pricing includes brokerage and duties.

CAD MSRP (C)

Hardware Lead Time: Ships same day when ordered before 2 p.m. Central

FRAMEWORX BANNER DISPLAY



These lightweight displays feature a contemporary design that brings new life to your exhibit.

- Banners attach using low-profile clear grommets
- Face cutout hole location is standard and cannot be customized

3' FrameWorx Banner Display

Item #	Description	1	2-5	6-11	12-24
263061	3' Single-Sided Kit	304.35	292.12	279.89	267.83
263062	3' Double-Sided Kit	362.61	348.16	333.70	319.10
263328	8.5' Kit	804.82	772.77	740.73	708.31
263331	10.5' Kit	879.34	844.31	809.29	774.26

Setup fee: \$29.81(G)

Pricing includes brokerage and duties.

3' Kit Includes: Silver or Black Hardware, Graphic and Soft Carry Case

CAD MSRP (C)

Description	Product Size	Finished Graphic Size	Product Wt.	Media
3'	36.75"W x 74"H x 15.5"D	view online template	5.6 lbs.	13 oz. smooth scrim vinyl
8.5'	101.75"W x 90.5"H x 15.5"D	view online template	15 lbs.	600 denier polyester
10.5'	123.25"W x 90.25"H x 15.5"D	view online template	17 lbs.	600 denier polyester

3.5' FrameWorx Face Cutout Banner Display

Item #	Description	1	2-5	6-11	12-24
263054	Single Kit	340.56	326.99	313.29	299.72

Setup fee: \$29.81(G)

Pricing includes brokerage and duties.

Kit Includes: Silver or Black Hardware, Graphic and Soft Carry Case

CAD MSRP (C)

Product Size	Finished Graphic Size	Product Wt.	Media
41"W x 81.75"H x 15.5"D	view online template	6.2 lbs.	13 oz. smooth scrim vinyl

Production Lead Time: 2 days for 13 oz. smooth scrim vinyl / 4 days for 600 denier polyester from final proof approval



3'

3.5' single face cutout

8.5'

10.5'

PRICES SHOWN IN CAD AND ARE SUBJECT TO CHANGE.

Pricing accounts for brokerage and duties. 10% Flat Shipping Rate is applied at checkout. No setup fee on orders placed via our website. Visit our website for current pricing.



BANNER DISPLAYS



31.5" x 70" Tri-X



Euro-X



The Tri-X back leg attaches to the aluminum hub to stabilize the display.



The Euro-X has an aluminum hub that extends into the strong support leg.

X BANNER DISPLAYS

The clean X design of these displays makes them simple, durable and easy to assemble.

- Artwork is printed on Titan™ 13 oz. smooth scrim vinyl
- The X shape of the frame is designed to keep the banner taut
- Corner grommets attach to plastic hooks on display arms
- Banners are finished with brass grommets by default; can be customized with nickel or clear plastic grommets by request
- Warranty details available online

Euro-X Banner Display

Item #	Description	1	2-5	6-11	12-24
263120	31.5" x 70" Kit	416.94	400.17	383.41	366.79
Setup fee: \$29.81(G)		Pricing includes brokerage and duties.			
CAD MSRP (C)					

Product Size	Finished Graphic Size	Product Wt.	Media
31.5"W x 70"H x 20.5"D	view online template	3.25 lbs.	Titan™ 13 oz. smooth scrim vinyl

Tri-X Banner Display

Item #	Description	1	2-5	6-11	12-24
263103	31.5" x 70" Kit	264.85	254.11	243.53	232.94
263112	31.5" x 79" Kit	304.19	291.97	279.89	267.68
263100	33.5" x 80" Kit	310.44	298.08	285.72	273.18
Setup fee: \$29.81(G)		Pricing includes brokerage and duties.			
CAD MSRP (C)					

Kit Includes: Hardware, Graphic and Drawstring Case

Description	Product Size	Finished Graphic Size	Product Wt.	Media
31.5" x 70"	31.5"W x 70"H x 31.5"D	view online template	2.25 lbs.	Titan™ 13 oz. smooth scrim vinyl
31.5" x 79"	31.5"W x 79"H x 32.5"D	view online template	3 lbs.	Titan™ 13 oz. smooth scrim vinyl
33.5" x 80"	33.5"W x 80"H x 32.5"D	view online template	3.25 lbs.	Titan™ 13 oz. smooth scrim vinyl

Production Lead Time: 2 days from final proof approval

HEADLINER BANNER DISPLAY



This enormous banner display is great for use at outdoor events.

- Banner available in backlit woven polyester or Titan™ 18 oz. opaque scrim vinyl
- Vinyl banners can be printed single- or double-sided; polyester banner available single-sided only
- Includes four heavy-duty black stakes
- Adjustable frame hardware is compatible with custom banner heights and widths (call for quote; restrictions may apply)
- Banners used outdoors have a 90-day warranty; banners used indoors have a 1-year warranty

Headliner Banner Display

Item #	Description	1	2-5	6-11	12-24
263400	Backlit Woven Polyester Single-Sided Kit	2606.71	2502.38	2398.05	2293.73
263401	18 oz. Opaque Scrim Vinyl Single-Sided Kit	2606.71	2502.38	2398.05	2293.73
263402	18 oz. Opaque Scrim Vinyl Double-Sided Kit	2813.88	2700.60	2588.82	2475.55
Setup fee: \$29.81(G)		Pricing includes brokerage and duties.			
CAD MSRP (C)					

Product Size	Finished Graphic Size	Product Wt. (Polyester / Vinyl)
129.75"W x 85.25"H x 39.5"D	view online template	56 lbs. / 60 lbs.

Production Lead Time: 2 days for 18 oz. scrim vinyl / 4 days for backlit woven polyester from final proof approval



Shown with backlit woven polyester



Banner rail slides into notches in the frame's hubs.



Set of two ballasts (item #263298 sold separately; see website) keep the feet weighted down.



Heavy-duty steel foot features a handle so it's easy to position during setup.



Thumbscrews on the frame make it easy to set up and adjust.

PRICES SHOWN IN CAD AND ARE SUBJECT TO CHANGE.

Pricing accounts for brokerage and duties. 10% Flat Shipping Rate is applied at checkout. No setup fee on orders placed via our website. Visit our website for current pricing.



when choosing a banner
have you considered...

- Will you be using your banner indoors or outdoors?
- How long will your banner be displayed?
- Do you need a single- or double-sided banner?

9 OZ. MESH VINYL BANNER



Made of breathable 60/40 mesh vinyl perfect for breezy days.

9 oz. Mesh Vinyl Banner (Single-Sided)

Item #	Description	Product Wt.	1	2-4	5-14	15-33
304411	2' x 6'	1.25 lbs.	95.98	88.09	80.79	74.82
Item #	Description	Product Wt.	1	2-3	4-9	10-22
304414	3' x 6'	2 lbs.	143.98	132.12	121.25	112.22
Item #	Description	Product Wt.	1	2-5	6-12	13-24
304417	4' x 8'	3 lbs.	235.64	215.51	199.41	180.03

Setup fee: \$29.81(G)

Pricing includes brokerage and duties.

CAD MSRP (C)

13 OZ. SCRIM VINYL BANNER



Versatile enough for both indoor and outdoor use.

13 oz. Scrim Vinyl Banner (Single-Sided)

Item #	Description	Product Wt.	1-2	3-7	8-22	23-49
304360	2' x 4'	1 lb.	56.14	50.52	45.47	41.55
Item #	Description	Product Wt.	1	2-3	4-9	10-22
304364	3' x 6'	2.5 lbs.	126.31	113.64	102.31	93.45
Item #	Description	Product Wt.	1	2-5	6-12	13-24
304367	4' x 8'	4 lbs.	205.37	184.81	166.33	151.87

Setup fee: \$29.81(G)

Pricing includes brokerage and duties.

CAD MSRP (C)

18 OZ. OPAQUE SCRIM VINYL BANNER



This banner is reinforced with scrim, making it extremely durable.

18 oz. Opaque Scrim Vinyl Banner (Single-Sided)

Item #	Description	Product Wt.	1	2-3	4-9	10-22
304384	3' x 6'	2.5 lbs.	143.98	132.12	121.25	112.22
Item #	Description	Product Wt.	1	2-5	6-12	13-24
304387	4' x 8'	4 lbs.	235.18	215.96	200.02	179.74
Item #	Description	Product Wt.	1	2-4	5-9	10-19
304388	4' x 10'	5 lbs.	294.05	270.07	250.08	224.61

Setup fee: \$29.81(G)

Pricing includes brokerage and duties.

CAD MSRP (C)

18 oz. Opaque Scrim Vinyl Banner (Double-Sided)

Item #	Description	Product Wt.	1-2	3-7	8-22	23-49
304470	2' x 4'	1 lb.	135.56	127.43	118.49	111.26
Item #	Description	Product Wt.	1	2-4	5-14	15-33
304471	2' x 6'	2 lbs.	203.29	191.07	177.66	166.92
Item #	Description	Product Wt.	1	2-5	6-12	13-24
304474	4' x 8'	4 lbs.	508.97	473.20	444.88	411.35

Setup fee: \$29.81(G)

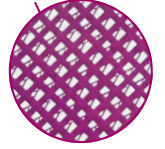
Pricing includes brokerage and duties.

CAD MSRP (C)

Production Lead Time: 2 days from final proof approval



3' x 6' banner with grommets



4' x 8' banner with grommets



2' x 4' banner with pole pockets



Popular Finishing Styles

Additional finishing styles available online.

Heat Weld

Single-sided vinyl banners only

Sewn

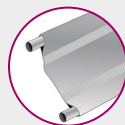
Fabric and vinyl banners



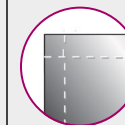
Hem & Grommets



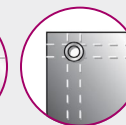
Hem, Rope & Grommets



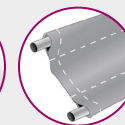
3'' Pole Pockets



Hem Only



Hem & Grommets



3'' Pole Pockets

PRICES SHOWN IN CAD AND ARE SUBJECT TO CHANGE.

Pricing accounts for brokerage and duties. 10% Flat Shipping Rate is applied at checkout. No setup fee on orders placed via our website. Visit our website for current pricing.



SAIL SIGNS

VALUE, STREAMLINE AND PREMIUM SAIL SIGNS



Sail signs are built to move in the wind, making them truly hard to miss.

- Warranty information available online
- Available single- or double-sided

when choosing a sail sign
have you considered...

- How long will your sail sign be displayed?
- Will you be using this product indoors or outdoors?



Value Sail Sign

Description	Item #	Single-Sided Flag				Double-Sided Flag				
		1	2-5	6-11	12-24	Item #	1	2-5	6-11	12-24
6.5' Teardrop Kit w/ Cross Base & Water Ballast	191611	304.48	295.40	286.31	277.06	191613	431.10	418.06	405.39	392.35
9.5' Teardrop Kit w/ Cross Base & Water Ballast	191619	345.33	335.04	324.60	314.32	191621	493.70	478.79	463.89	449.36
13' Teardrop Kit w/ Cross Base & Water Ballast	191627	429.24	416.19	403.53	390.48	191629	642.36	623.36	603.98	584.61
7.5' Razor Kit w/ Cross Base & Water Ballast	191651	304.48	295.40	286.31	277.06	191653	431.10	418.06	405.39	392.35
10.5' Razor Kit w/ Cross Base & Water Ballast	191659	345.33	335.04	324.60	314.32	191661	493.70	478.79	463.89	449.36
15' Razor Kit w/ Cross Base & Water Ballast	191667	429.24	416.19	403.53	390.48	191669	642.36	623.36	603.98	584.61

Setup fee: \$29.81(G)

Kit Includes: Hardware with Specified Base and Graphic (Does not include carry case)

Pricing includes brokerage and duties.

CAD MSRP (C)



Streamline Sail Sign

Description	Item #	Single-Sided Flag				Double-Sided Flag				
		1	2-5	6-11	12-24	Item #	1	2-5	6-11	12-24
6' Teardrop Kit w/ Three-Legged Base & Water Ballast	191401	433.33	420.29	407.25	394.21	191409	599.89	582.00	564.12	546.23
8' Teardrop Kit w/ Scissor Base & Water Ballast	191403	549.21	532.82	516.42	499.66	191411	742.22	719.86	697.51	675.15
11.5' Teardrop Kit w/ Scissor Base & Water Ballast	191405	647.95	628.58	608.83	589.45	191413	922.56	894.99	867.41	839.10
15' Teardrop Kit w/ Scissor Base & Water Ballast	191407	766.81	743.34	720.61	697.51	191415	1113.33	1079.79	1047.01	1013.47
7' Razor Kit w/ Three-Legged Base & Water Ballast	191429	433.33	420.29	407.25	394.21	191437	599.89	582.00	564.12	546.23
9' Razor Kit w/ Scissor Base & Water Ballast	191431	549.21	532.82	516.42	499.66	191439	742.22	719.86	697.51	675.15
13' Razor Kit w/ Scissor Base & Water Ballast	191433	647.95	628.58	608.83	589.45	191441	922.56	894.99	867.41	839.10
17' Razor Kit w/ Scissor Base & Water Ballast	191435	766.81	743.34	720.61	697.51	191443	1113.33	1079.79	1047.01	1013.47

Setup fee: \$29.81(G)

Kit Includes: Hardware with Specified Base, Graphic and Soft Carry Case

Pricing includes brokerage and duties.

CAD MSRP (C)



Premium Sail Sign

Description	Item #	Single-Sided Flag				Double-Sided Flag				
		1	2-5	6-11	12-24	Item #	1	2-5	6-11	12-24
6' Teardrop Kit w/ Three-Legged Base & Water Ballast	190979	486.24	471.71	456.81	442.28	190978	707.19	685.96	665.09	643.85
8' Teardrop Kit w/ Scissor Base & Water Ballast	190763	601.75	583.86	565.61	547.72	190762	847.29	821.96	796.62	771.28
11.5' Teardrop Kit w/ Scissor Base & Water Ballast	190765	703.47	682.60	661.36	640.13	190764	1033.59	1003.04	971.74	941.19
15' Teardrop Kit w/ Scissor Base & Water Ballast	190767	815.99	792.15	767.56	742.96	190766	1218.40	1181.89	1145.37	1108.86
7' Razor Kit w/ Three-Legged Base & Water Ballast	190985	486.24	471.71	456.81	442.28	190984	707.19	685.96	665.09	643.85
9' Razor Kit w/ Scissor Base & Water Ballast	190757	601.75	583.86	565.61	547.72	190756	847.29	821.96	796.62	771.28
13' Razor Kit w/ Scissor Base & Water Ballast	190759	703.47	682.60	661.36	640.13	190758	1033.59	1003.04	971.74	941.19
17' Razor Kit w/ Scissor Base & Water Ballast	190761	815.99	792.15	767.56	742.96	190760	1218.40	1181.89	1145.37	1108.86

Setup fee: \$29.81(G)

Kit Includes: Hardware with Specified Base, Graphic and Soft Carry Case

Pricing includes brokerage and duties.

CAD MSRP (C)

Production Lead Time: 4 days for Value and Premium / 2 days for Streamline from final proof approval



Item #190711
Heavy-duty cross base
(indoor/outdoor)



Item #190707
Scissor base
(indoor/outdoor)



Item #190706
Ground spike (outdoor)



Item #220351
Value sail sign soft carry case



Item #191591
Value cross base
(indoor/outdoor)*



Item #190708
Round water ballast for
6'-13' sail signs (indoor/outdoor)

Sail Sign Accessories

Item #	Description	Product Wt.	1	2-5	6-11	12-24
190706	Ground Spike	2 lbs.	88.98	86.29	83.61	80.92
190711	Heavy-Duty Cross Base	9 lbs.	156.80	152.17	147.40	142.71
190708	Round Water Ballast	0.5 lb.	85.26	82.72	80.18	77.57
190707	Scissor Base	7 lbs.	135.56	131.53	127.43	123.40
191591	Value Cross Base*	2.8 lbs.	55.74	54.07	52.40	50.72
220351	Value Sail Sign Soft Carry Case	0.8 lb.	35.09	34.04	33.00	31.93

Pricing includes brokerage and duties.

CAD MSRP (C)

*Covered by a 90-day product warranty

Hardware Lead Time: Ships same day when ordered before 2 p.m. Central

PRICES SHOWN IN CAD AND ARE SUBJECT TO CHANGE.

Pricing accounts for brokerage and duties. 10% Flat Shipping Rate is applied at checkout. No setup fee on orders placed via our website. Visit our website for current pricing.



NYLON FLAG



Lightweight and fade-resistant, our nylon flags come in a variety of sizes and are perfect for indoor and outdoor use.

- Constructed of 200 denier nylon
- Standard finishing includes canvas header and brass grommets
- Four rows of lock-stitching provide extra reinforcement on the fly end of rectangular flags
- Single- and double-sided options available
- Custom sizes and finishing available (visit website or call for quote; restrictions may apply)
- Flags used outdoors have a 90-day warranty; flags used indoors have a 1-year warranty
- Not eligible for Rush Service

Rectangle Nylon Flag

Item #	Description	Product Wt.	1	2-5	6-11	12-24
304535	3' x 5' Single-Sided Flag	0.5 lb.	151.58	121.25	113.71	98.52
304555	3' x 5' Double-Sided Flag	1.5 lbs.	302.99	242.34	227.29	197.04
304536	4' x 6' Single-Sided Flag	0.7 lb.	208.35	166.62	156.19	135.41
304556	4' x 6' Double-Sided Flag	2.1 lbs.	416.94	333.55	312.68	271.10
304537	5' x 8' Single-Sided Flag	1 lb.	302.99	242.34	227.29	197.04
304557	5' x 8' Double-Sided Flag	3 lbs.	606.22	485.13	454.57	394.21

Setup fee: \$29.81(G)

Pricing includes brokerage and duties.

CAD MSRP (C)

Production Lead Time: 4 days from final proof approval



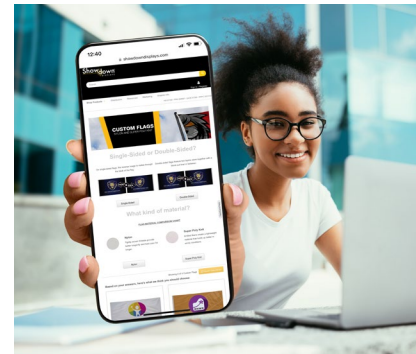
Single-Sided

Single-sided flags are printed on one side; reverse image shows through the back.



Double-Sided

Double-sided flags have the image printed correctly on both sides with a block-out polyester liner.



FABRIC FLAG



Easy to hang, this flag works with any standard flagpole.

- Best for outdoor use
- Single- and double-sided options available
- Artwork is dye sublimated on super poly knit fabric for single-sided flags and on block-out polyester for double-sided flags
- Custom sizes and finishing available (visit website or call for quote; restrictions may apply)
- Flags used outdoors have a 90-day warranty; flags used indoors have a 1-year warranty

Rectangle Fabric Flag

Item #	Description	Product Wt.	1	2-5	6-11	12-24
300007	3' x 5' Single-Sided Flag	0.5 lb.	159.17	127.36	119.38	103.43
300019	3' x 5' Double-Sided Flag	1 lb.	318.20	254.55	238.62	206.86
300011	4' x 6' Single-Sided Flag	1 lb.	218.79	174.97	164.10	142.18
300020	4' x 6' Double-Sided Flag	2 lbs.	437.80	350.24	328.33	284.51
300015	5' x 8' Single-Sided Flag	1.25 lbs.	318.20	254.55	238.62	206.86
300021	5' x 8' Double-Sided Flag	2.5 lbs.	636.40	509.34	477.30	413.96

Setup fee: \$29.81(G)

Pricing includes brokerage and duties.

CAD MSRP (C)

Production Lead Time: 4 days from final proof approval



Double-sided flags feature a lightweight block-out polyester for increased flyability.



Single-Sided

Single-sided flags are printed on one side; reverse image shows through the back.



Double-Sided

Double-sided flags have the image printed correctly on both sides with a block-out polyester.

PRICES SHOWN IN CAD AND ARE SUBJECT TO CHANGE.

Pricing accounts for brokerage and duties. 10% Flat Shipping Rate is applied at checkout. No setup fee on orders placed via our website. Visit our website for current pricing.



SIGNAGE

SIGNICADE® AND SIGNICADE® DELUXE A-FRAMES



With different sizes to choose from, these A-frames fit a variety of spaces.

- Maintenance-free and weather-resistant
- Folds flat for transport or storage



Signicade A-Frame

Item #	Description	1	2-5	6-11	12-24
210133	Kit	325.96	316.12	301.36	291.52

Setup fee: \$29.81(G)

Pricing includes brokerage and duties.

Kit Includes: Orange, Yellow or White Hardware, 2 Single-Sided Graphics, 2 Strips of Hook and 2 Strips of Loop

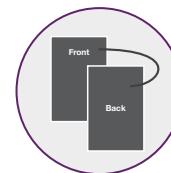
Product Size	Finished Graphic Size	Product Wt.	Media
24.5"W x 42"H x 31"D	view online template	20 lbs.	4 mm corrugated plastic

Frame Colors Orange PMS 2028 Yellow PMS 123 White

Production Lead Time: 2 days from final proof approval

when choosing signage have you considered...

- Will your sign be used indoors or outdoors?
- Will your message be permanent or will it change frequently?
- Will your sign be stationary or will you be transporting it from place to place?



Double-sided signboards have your artwork printed on both sides, making each signboard reversible.



Signicade Deluxe A-Frame

Item #	Description	1	2-5	6-11	12-24
210121	Single-Sided Kit	358.29	347.11	331.02	319.84
210122	Double-Sided Kit	383.41	372.16	354.41	343.39

Setup fee: \$29.81(G)

Pricing includes brokerage and duties.

Kit Includes: Black or White Hardware and 2 Single- or Double-Sided Graphics

Product Size	Finished Graphic Size	Product Wt.	Media
27"W x 38.5"H x 19"D	view online template	21 lbs.	4 mm corrugated plastic

Frame Colors Black White

Production Lead Time: 2 days from final proof approval



Features & Benefits



Plastic base won't rust, making it great for outdoor use.



Convenient molded handle makes it easy to move.



Frames can be filled with water or sand for stability.



Signboards are easy to swap out to accommodate frequent message changes.

PRICES SHOWN IN CAD AND ARE SUBJECT TO CHANGE.

Pricing accounts for brokerage and duties. 10% Flat Shipping Rate is applied at checkout. No setup fee on orders placed via our website. Visit our website for current pricing.



CORRUGATED PLASTIC SIGN



Great for use on lawns, this sign gives you a simple, inexpensive way to get your message noticed.

- Constructed of 4 mm corrugated plastic
- Full-color artwork can be printed on one or both sides
- Custom sizes and shapes available (call for quote; restrictions may apply)
- Corrugated plastic can be recycled after use

Corrugated Plastic Sign

Item #	Description	1	2-5	6-11	12-24
271110	36"W x 24"H Single-Sided	41.10	39.85	38.63	37.40
271111	36"W x 24"H Double-Sided	53.97	52.34	50.73	49.11
271113	24"W x 18"H Single-Sided	27.24	26.43	25.60	24.78
271114	24"W x 18"H Double-Sided	35.60	34.53	33.48	32.40

Imprinted sign setup fee: \$29.81(G) Pricing includes brokerage and duties.
CAD MSRP (C)

Production Lead Time: 2 days from final proof approval

STANDARD STEP STAKE

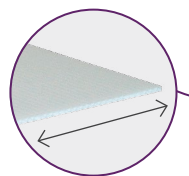
- Installation is quick and easy

Standard Step Stake

Item #	Description	1-10	11-20	21-30	31+
381501	Standard Step Stake	4.22	4.13	4.02	3.92

Pricing includes brokerage and duties.
CAD MSRP (C)

Hardware Lead Time: Ships same day when ordered before 2 p.m. Central



Stakes (sold separately) slide into fluted openings along the width of the signboard.

FLOOR HUGGER MAT



Put quality designs right at your feet. The Floor Hugger mat features a nylon yarn surface with black rubber borders and backing.

- Treated with Stainstopper™ and static dissipative
- Will not crack or curl
- Produced with polyester PET yarn consisting of 100% post-consumer recycled content
- Mat sizes are not exact; allow 3-5% size variance
- Art restrictions may apply (see website for details)
- Not eligible for Rush Service

Floor Hugger Mat

Item #	Description	Product Wt.	1	2-5	6-10	11-25
259000	3' x 5'	8 lbs.	515.68	422.90	366.04	350.55
259001	3' x 10'	16 lbs.	846.55	694.15	601.00	575.67
259002	4' x 6'	12 lbs.	659.13	540.27	467.99	448.24

Setup fee: \$29.81(G) Pricing includes brokerage and duties.
CAD MSRP (C)

Production Lead Time: 7 days from final proof approval

Light colors show dirt easily and are not recommended for background colors. Item has limited number of available colors (150). We cannot guarantee color matching. Test strip/match print/test grid not available.



4' x 6'



Mat features chemical-resistant plush carpet.

PRICES SHOWN IN CAD AND ARE SUBJECT TO CHANGE.

Pricing accounts for brokerage and duties. 10% Flat Shipping Rate is applied at checkout. No setup fee on orders placed via our website. Visit our website for current pricing.





10' tent shown with full-bleed dye sublimation

when choosing a tent
have you considered...

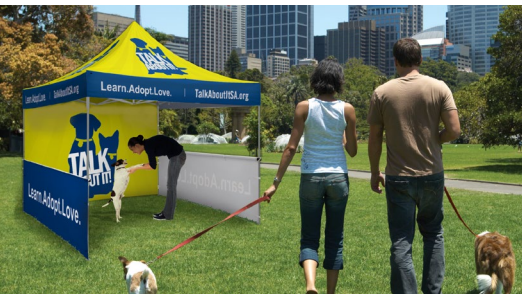
- How frequently will you be using your tent?
- What is the desired impact of your promotional message?
- Would you like to add accessories for additional branding options?

10' STANDARD TENT



This popular tent strikes a perfect balance between cost effectiveness and portability.

- 1.125"W square legs constructed of 1 mm pebble powder-coated steel
- ABS nylon joints
- Crank-up canopy creates a taut, clean peak
- 10' canopy available in eight stock colors (see below), with full-bleed dye sublimation or with full-bleed UV printing (available online)



10' Standard Tent

Item #	Description	1	2-5	6-11	12-24
240611	Full-Color Imprint Kit (1 Location)	914.36	895.73	877.85	850.27
240612	Full-Color Imprint Kit (2 Locations)	1015.71	995.59	975.47	944.91
240614	Full-Color Imprint Kit (4 Locations)	1194.56	1170.71	1146.86	1111.09
240619	Dye Sublimation Kit	1493.38	1463.57	1433.76	1388.31

Setup fee: \$29.81(G)

Pricing includes brokerage and duties.

Kit Includes: Tent Frame, Canopy, Stake Kit and Soft Carry Case with Wheels

CAD MSRP (C)

Product Size	Finished Graphic Size	Product Wt.
118.5"W x 127.5"-140"H x 118.5"D	view online template	51.5 lbs.

Production Lead Time: 4 days for full-color imprint / 7 days for dye sublimation from final proof approval



Legs feature plastic push buttons for pinch-free height adjustments.



Easy-Glide Tent Feet allow the tent frame to slide on dirt and grass, preventing the legs from catching. US Patent #D760857

Features & Benefits



Sets up in minutes.



Adjust tent height with the push of a button.



Crank-up canopy creates a taut, clean peak.



Secure tent to the ground with stake kit.



Collapses easily to store in soft case with wheels.

10' Tent Stock Canopy Colors



WHITE	LEMON PMS 109	BLAZE ORANGE PMS 804	CHERRY PMS 1795
EMERALD PMS 347	COBALT PMS 7683	NAVY BLUE PMS 2767	BLACK

PRICES SHOWN IN CAD AND ARE SUBJECT TO CHANGE.

Pricing accounts for brokerage and duties. 10% Flat Shipping Rate is applied at checkout. No setup fee on orders placed via our website. Visit our website for current pricing.



8' & 10' DELUXE TENTS



Designed for frequent use, these tents feature a stronger, heavier steel frame.

- 1.25"W square legs constructed of 1 mm pebble powder-coated steel frame
- ABS glass-filled nylon joints
- Crank-up canopy creates a taut, clean peak
- 10' canopy available in eight stock colors (see page 16), with full-bleed dye sublimation or with full-bleed UV printing (available online)
- 8' canopy available with full-bleed dye sublimation only

8' Deluxe Tent

Item #	Description	1	2-5	6-11	12-24
240829	Dye Sublimation Kit	2484.50	2435.31	2384.64	2310.12

Setup fee: \$29.81(G) **Pricing includes brokerage and duties.**
 Kit Includes: Tent Frame, Canopy, Stake Kit and Soft Carry Case with Wheels CAD MSRP (C)

10' Deluxe Tent

Item #	Description	1	2-5	6-11	12-24
240621	Full-Color Imprint Kit (1 Location)	1093.95	1072.34	1049.99	1017.20
240622	Full-Color Imprint Kit (2 Locations)	1196.05	1171.45	1147.61	1111.84
240624	Full-Color Imprint Kit (4 Locations)	1374.15	1346.58	1319.00	1278.02
240629	Dye Sublimation Kit	1672.23	1639.44	1606.65	1555.98

Setup fee: \$29.81(G) **Pricing includes brokerage and duties.**
 Kit Includes: Tent Frame, Canopy, Stake Kit and Soft Carry Case with Wheels CAD MSRP (C)

Description	Product Size	Finished Graphic Size	Product Wt.
8'	96"W x 117.5"-130"H x 96"D	view online template	58 lbs.
10'	118.5"W x 127"-139.5"H x 118.5"D	view online template	63.5 lbs.

Production Lead Time: 4 days for full-color imprint / 7 days for dye sublimation from final proof approval



Easy-Glide Tent Feet allow the tent frame to slide on dirt and grass, preventing the legs from catching. US Patent #D760857

10' & 20' PREMIUM TENTS



These Premium tents feature a strong aluminum frame.

- 1.75" diameter hexagon legs constructed of 0.8 mm anodized aluminum frame
- ABS glass-filled nylon joints
- Crank-up canopy creates a taut, clean peak
- 10' canopy available in eight stock colors (see page 16), with full-bleed dye sublimation or with full-bleed UV printing (available online)
- 20' canopy available in white, cherry, cobalt, navy, black, with full-bleed dye sublimation or with full-bleed UV printing (available online)

10' Premium Tent

Item #	Description	1	2-5	6-11	12-24
240631	Full-Color Imprint Kit (1 Location)	1220.64	1196.05	1171.45	1134.94
240632	Full-Color Imprint Kit (2 Locations)	1321.98	1295.90	1269.08	1229.58
240634	Full-Color Imprint Kit (4 Locations)	1500.83	1470.28	1440.47	1395.76
240639	Dye Sublimation Kit	1798.91	1763.14	1727.37	1673.72

Setup fee: \$29.81(G) **Pricing includes brokerage and duties.**
 Kit Includes: Tent Frame, Canopy, Stake Kit and Soft Carry Case with Wheels CAD MSRP (C)

10' x 20' Premium Tent

Item #	Description	1	2-5	6-11	12-24
240571	Full-Color Imprint Kit (1 Location)	1904.73	1867.47	1828.72	1772.09
240572	Full-Color Imprint Kit (2 Locations)	2010.55	1970.31	1930.07	1870.45
240574	Full-Color Imprint Kit (4 Locations)	2362.28	2314.59	2266.90	2196.85
240578	Full-Color Imprint Kit (8 Locations)	2804.93	2748.30	2693.15	2608.20
240582	Full-Color Imprint Kit (12 Locations)	2839.21	2782.58	2725.94	2640.99
240583	Dye Sublimation Kit	3773.69	3697.68	3623.16	3509.89

Setup fee: \$29.81(G) **Pricing includes brokerage and duties.**
 Kit Includes: Tent Frame, Canopy, Stake Kit and Soft Carry Case with Wheels CAD MSRP (C)

Description	Product Size	Finished Graphic Size	Product Wt.
10'	118"W x 126.75"-139.25"H x 118"D	view online template	52 lbs.
20'	234.5"W x 126.75"-139.25"H x 118.25"D	view online template	92 lbs.

Production Lead Time: 4 days for full-color imprint / 7 days for dye sublimation from final proof approval



Easy-Glide Tent Feet allow the tent frame to slide on dirt and grass, preventing the legs from catching. US Patent #D760857

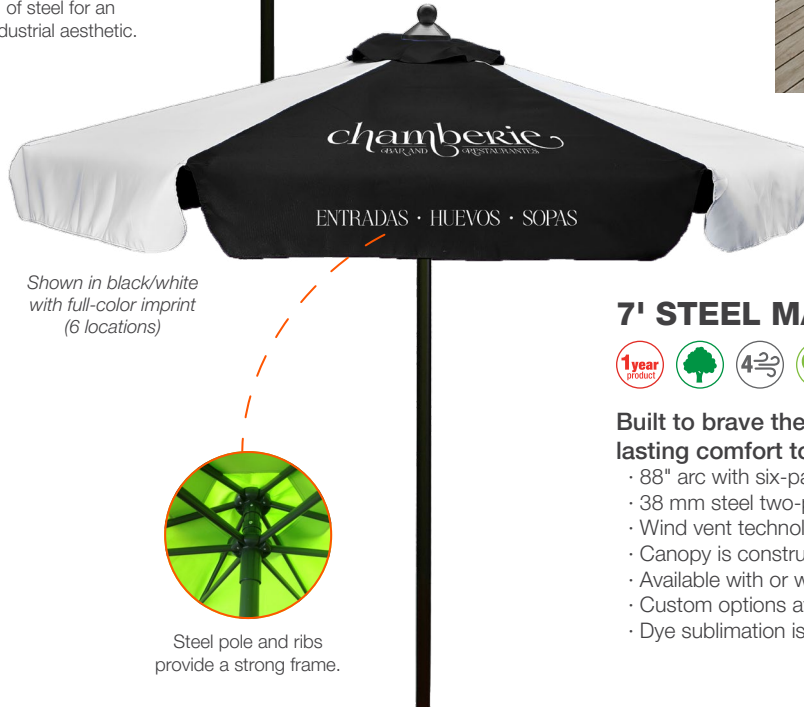
PRICES SHOWN IN CAD AND ARE SUBJECT TO CHANGE.
 Pricing accounts for brokerage and duties. 10% Flat Shipping Rate is applied at checkout. No setup fee on orders placed via our website. Visit our website for current pricing.

MARKET UMBRELLAS



Shown with dye sublimation (single-sided)

Pole is constructed of steel for an industrial aesthetic.



Shown in black/white with full-color imprint (6 locations)

Steel pole and ribs provide a strong frame.



7' STEEL MARKET UMBRELLA



Built to brave the elements, this market umbrella brings lasting comfort to every outdoor moment.

- 88" arc with six-panel construction
- 38 mm steel two-piece pole with 25 mm steel ribs
- Wind vent technology allows greater airflow
- Canopy is constructed of UV-treated rPET polyester
- Available with or without valance; stock color options vary
- Custom options available (call for quote; restrictions may apply)
- Dye sublimation is not eligible for Rush Service

7' Steel Market Umbrella

Item #	Description	1	2-5	6-11	12-24
AU0031	Full-Color Imprint Kit (1 Location)	180.34	173.78	166.92	160.37
AU0033	Full-Color Imprint Kit (3 Locations)	194.94	187.79	180.49	173.48
AU0036	Full-Color Imprint Kit (6 Locations)	216.85	208.96	200.76	192.86
AU0385	Dye Sublimation Kit (Single-Sided)	337.73	325.35	312.54	300.47
AU0386	Dye Sublimation Kit (Double-Sided)	441.90	425.88	409.11	393.09

Setup fee: **\$29.81(G)**

Pricing includes brokerage and duties.

Kit Includes: Hardware and Canopy (Base required. Sold separately; see website)

CAD MSRP (C)

7' Steel Market Umbrella with Valance

Item #	Description	1	2-5	6-11	12-24
AU0V31	Full-Color Imprint Kit (1 Location)	180.34	173.78	166.92	160.37
AU0V32	Full-Color Imprint Kit (2 Locations)	187.64	180.78	173.63	166.92
AU0V33	Full-Color Imprint Kit (3 Locations)	194.94	187.79	180.49	173.48
AU0V36	Full-Color Imprint Kit (6 Locations)	216.85	208.96	200.76	192.86
AUV385	Dye Sublimation Kit (Single-Sided)	337.73	325.35	312.54	300.47
AUV386	Dye Sublimation Kit (Double-Sided)	441.90	425.88	409.11	393.09

Setup fee: **\$29.81(G)**

Pricing includes brokerage and duties.

Kit Includes: Hardware and Canopy (Base required. Sold separately; see website)

CAD MSRP (C)

Product Size	Arc	Open Diameter	Size	Finished Graphic	Size	Product Wt.	Media
83.5"W x 96"H x 83.5"D	88"	83.5"		view online template		12 lbs.	rPET polyester

Production Lead Time: 7 days for full-color imprint / 30 days for dye sublimation from final proof approval

Stock 7' Steel Market Umbrella Colors

- White
- Natural PMS 9060
- Cream PMS 7499
- Canary PMS 102
- Pumpkin PMS 165
- Crimson PMS 186
- Ruby PMS 201
- Pink PMS 204
- Grape PMS 2607
- Light Blue PMS 543
- Sky Blue PMS 2995
- Lapis PMS 2945
- Midnight PMS 2965
- Lime Green PMS 375
- Spruce PMS 3435
- Cool Gray 11
- Black

Stock 7' Steel Market Umbrella with Valance Colors

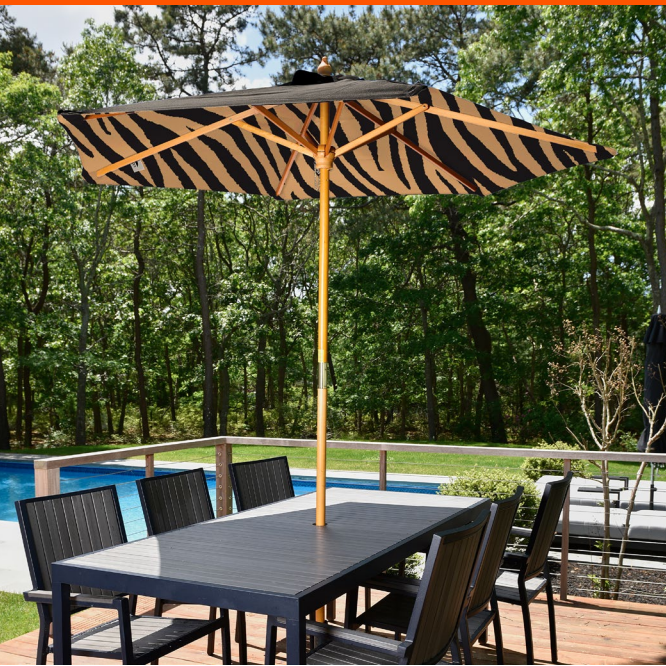
- White
- Crimson PMS 186
- Lapis PMS 2945
- Midnight PMS 2965
- Spruce PMS 3435
- Black
- Black/White
- White/Crimson PMS 186
- White/Lapis PMS 2945
- White/Midnight PMS 2965

PMS colors are for reference only and may vary slightly from actual color.

PRICES SHOWN IN CAD AND ARE SUBJECT TO CHANGE.

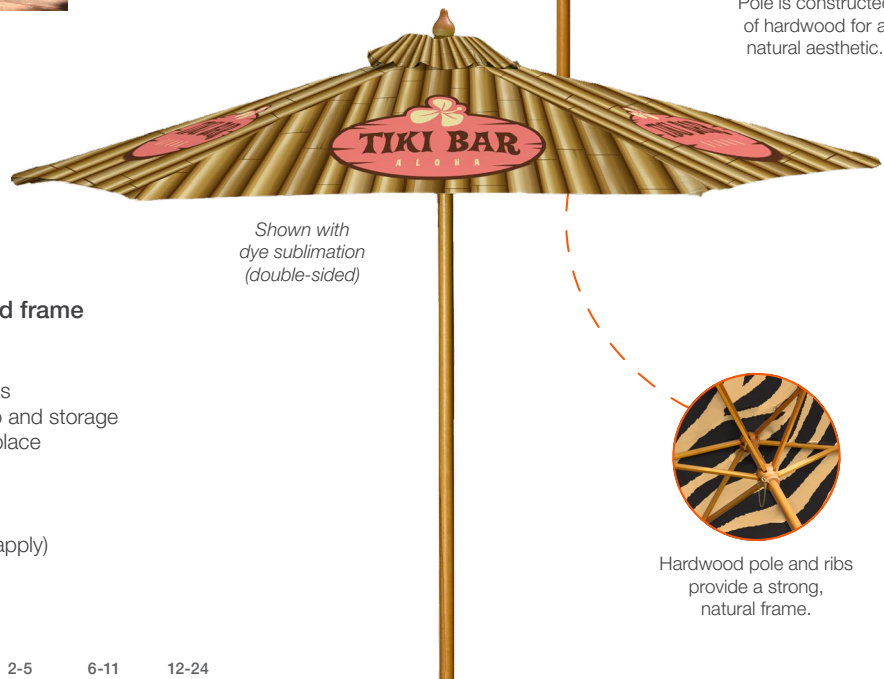
Pricing accounts for brokerage and duties. 10% Flat Shipping Rate is applied at checkout. No setup fee on orders placed via our website. Visit our website for current pricing.





Shown in white/midnight with full-color imprint (2 locations)

Pole is constructed of hardwood for a natural aesthetic.



Shown with dye sublimation (double-sided)

Hardwood pole and ribs provide a strong, natural frame.

7' WOOD MARKET UMBRELLA



Forged by nature, built to last – the strongest wood frame in the industry!

- 87" arc with six-panel construction
- 38 mm dia. hardwood pole with 25 mm dia. hardwood ribs
- Two-piece brass screw-locking pole design for easy setup and storage
- Manual pin-and-chain locking system secures canopy in place
- Wind vent technology allows greater airflow
- Canopy is constructed of UV-treated rPET polyester
- Available with or without valance; stock color options vary
- Custom options available (call for quote; restrictions may apply)
- Dye sublimation is not eligible for Rush Service

7' Wood Market Umbrella

Item #	Description	1	2-5	6-11	12-24
AU0041	Full-Color Imprint Kit (1 Location)	198.07	190.77	183.32	176.17
AU0043	Full-Color Imprint Kit (3 Locations)	212.69	204.93	196.88	189.13
AU0046	Full-Color Imprint Kit (6 Locations)	234.59	226.10	217.16	208.66
AU0401	Dye Sublimation Kit (Single-Sided)	355.46	342.49	328.94	316.12
AU0402	Dye Sublimation Kit (Double-Sided)	459.79	443.02	425.51	409.11

Setup fee: \$29.81(G)

Pricing includes brokerage and duties.

Kit Includes: Hardware and Canopy (Base required. Sold separately; see website)

CAD MSRP (C)

7' Wood Market Umbrella with Valance

Item #	Description	1	2-5	6-11	12-24
AU0V41	Full-Color Imprint Kit (1 Location)	198.07	190.77	183.32	176.17
AU0V42	Full-Color Imprint Kit (2 Locations)	205.37	197.92	190.03	182.73
AU0V43	Full-Color Imprint Kit (3 Locations)	212.69	204.93	196.88	189.13
AU0V46	Full-Color Imprint Kit (6 Locations)	234.59	226.10	217.16	208.66
AUV401	Dye Sublimation Kit (Single-Sided)	355.46	342.49	328.94	316.12
AUV402	Dye Sublimation Kit (Double-Sided)	459.79	443.02	425.51	409.11

Setup fee: \$29.81(G)

Pricing includes brokerage and duties.

Kit Includes: Hardware and Canopy (Base required. Sold separately; see website)

CAD MSRP (C)

Product Size	Arc	Open Diameter Size	Finished Graphic Size	Product Wt.	Media
70.5"W x 95"H x 70.5"D	87"	70.5"	view online template	13 lbs.	rPET polyester

Production Lead Time: 7 days for full-color imprint / 30 days for dye sublimation from final proof approval

Stock 7' Wood Market Umbrella Colors

- White
- Cream PMS 7499
- Pumpkin PMS 165
- Ruby PMS 201
- Grape PMS 2607
- Sky Blue PMS 2995
- Midnight PMS 2965
- Spruce PMS 3435
- Black
- Natural PMS 9060
- Canary PMS 102
- Crimson PMS 186
- Pink PMS 204
- Light Blue PMS 543
- Lapis PMS 2945
- Lime Green PMS 375
- Cool Gray 11

Stock 7' Wood Market Umbrella with Valance Colors

- White
- Lapis PMS 2945
- Spruce PMS 3435
- Black/White
- White/Lapis PMS 2945
- Crimson PMS 186
- Midnight PMS 2965
- Black
- White/Crimson PMS 186
- White/Midnight PMS 2965

PMS colors are for reference only and may vary slightly from actual color.

PRICES SHOWN IN CAD AND ARE SUBJECT TO CHANGE.
Pricing accounts for brokerage and duties. 10% Flat Shipping Rate is applied at checkout. No setup fee on orders placed via our website. Visit our website for current pricing.



HANDHELD UMBRELLAS



Shown with dye sublimation (double-sided)

Single-sided dye sublimated umbrellas are printed on one side; reverse image shows through underneath.



Shown in white/pumpkin with full-color imprint (1 location)

Auto-open button is easily accessible on the anti-slip rubber handle with wrist strap.



STEAL UMBRELLA



This versatile and eco-friendly umbrella is the perfect everyday companion, offering great quality at a low price.

- 44" arc with eight-panel construction
- Auto-open folding umbrella
- Steel shaft and fiberglass ribs
- Anti-slip rubber handle with wrist strap
- Solid-color canopy is constructed of rPET polyester;
- two-color canopy is constructed of rPET polyester and nylon
- Minimum order quantity of 12 for full-color imprint;
- 25 for dye sublimation
- Custom options available (call for quote; restrictions may apply)
- Dye sublimation is not eligible for Rush Service

Full-Color Imprint

Item #	Description	12-24	25-49	50-74	75-99
A00041	Steal Umbrella (1 Location)	18.69	17.97	17.21	16.44
A00042	Steal Umbrella (2 Locations)	20.71	19.91	19.07	18.23
A00044	Steal Umbrella (4 Locations)	24.77	24.03	23.28	22.78

Setup fee: \$29.81(G)

Stock fabric colors with full-color artwork.
Minimum order quantity of 12.

Pricing includes brokerage and duties.

CAD MSRP (C)

Closed Product Size	Arc	Finished Graphic Size	Product Wt.	Media
1.5"W x 13"H x 1.5"D	44"	view online template	11 lbs. (qty 12)	solid-color: rPET polyester two-color: rPET polyester (white) / nylon (color)

Dye Sublimation

Item #	Description	25-49	50-99	100-249	250-499
A00380	Steal Umbrella (Single-Sided)	64.98	62.47	59.85	57.16
A00381	Steal Umbrella (Double-Sided)	76.82	73.89	70.78	67.59

Setup fee: \$29.81(G)

White fabric fully dye sublimated with full-color artwork.
Minimum order quantity of 25.

Pricing includes brokerage and duties.

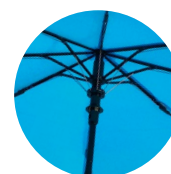
CAD MSRP (C)

Closed Product Size	Arc	Finished Graphic Size	Product Wt.	Media
1.5"W x 13"H x 1.5"D	44"	view online template	23 lbs. (qty 25)	rPET polyester

Production Lead Time: 5 days for full-color imprint / 30 days for dye sublimation from final proof approval



Folds down to 13" for portability.



Steel shaft with fiberglass ribs for lightweight durability.

Stock Steal Umbrella Colors

- White
- Canary PMS 102
- Pumpkin PMS 165
- Crimson PMS 186
- Ruby PMS 201
- Pink PMS 204
- Purple PMS 2685
- Cyan PMS 2925
- Azure PMS 286
- Indigo PMS 295
- Lime Green PMS 375
- Spruce PMS 3435
- Cool Gray 11
- Black
- Black/White
- White/Pumpkin PMS 165
- White/Crimson PMS 186
- White/Ruby PMS 201
- White/Purple PMS 2685
- White/Azure PMS 286
- White/Indigo PMS 295
- White/Spruce PMS 3435

PMS colors are for reference only and may vary slightly from actual color.

PRICES SHOWN IN CAD AND ARE SUBJECT TO CHANGE.

Pricing accounts for brokerage and duties. 10% Flat Shipping Rate is applied at checkout. No setup fee on orders placed via our website. Visit our website for current pricing.

REBEL 2 UMBRELLA



This stylish and eco-conscious umbrella is designed for ultimate convenience and protection.

- 46" arc with eight-panel construction
- Fiberglass shaft and ribs
- Rubber grip handle with wrist strap
- Features an inverted design that prevents water from dripping when closed
- Canopy constructed with rPET polyester
- Minimum order quantity of 12 for full-color imprint; 25 for dye sublimation
- Custom options available (call for quote; restrictions may apply)
- Dye sublimation is not eligible for Rush Service

Full-Color Imprint

Item #	Description	12-24	25-49	50-74	75-99
A00171	Rebel 2 Umbrella (1 Location)	34.11	33.09	32.07	31.38
A00172	Rebel 2 Umbrella (2 Locations)	36.14	35.05	33.98	33.24
A00174	Rebel 2 Umbrella (4 Locations)	40.21	39.00	37.80	37.00

Setup fee: **\$29.81(G)**

Pricing includes brokerage and duties.

Stock fabric colors with full-color artwork.
Minimum order quantity of 12.

CAD MSRP (C)

Closed Product Size	Arc	Finished Graphic Size	Product Wt.	Media
2.5"W x 34.5"H x 2.5"D	46"	view online template	18.25 lbs. (qty 12)	rPET polyester

Dye Sublimation

Item #	Description	25-49	50-99	100-249	250-499
A00384	Rebel 2 Umbrella (Double-Sided)	85.33	82.04	78.55	75.04

Setup fee: **\$29.81(G)**

Pricing includes brokerage and duties.

White fabric fully dye sublimated with full-color artwork.
Minimum order quantity of 25.

CAD MSRP (C)

Closed Product Size	Arc	Finished Graphic Size	Product Wt.	Media
2.5"W x 34.5"H x 2.5"D	46"	view online template	38 lbs. (qty 25)	rPET polyester

Production Lead Time: 5 days for full-color imprint / 30 days for dye sublimation from final proof approval



Shown with dye sublimation (double-sided)



Shown in black/crimson with full-color imprint (4 locations)



Closes down to 34.5".

Stock Rebel 2 Umbrella Colors

- Black
 - Black/Azure PMS 286
 - Black/Crimson PMS 186
- PMS colors are for reference only and may vary slightly from actual color.

SUPER FLAT MINI UMBRELLA



This compact yet durable umbrella is designed for ultimate convenience and reliability.

- 43" arc with six-panel construction
- Auto-open/close folding umbrella
- Aluminum shaft and fiberglass ribs
- Rubber handle with wrist strap
- Wind vent technology allows greater airflow
- Canopy made with rPET polyester
- Minimum order quantity of 12
- Custom options available (call for quote; restrictions may apply)

Full-Color Imprint

Item #	Description	12-24	25-49	50-74	75-99
A00271	Super Flat Mini Umbrella (1 Location)	26.81	26.01	25.20	24.66
A00272	Super Flat Mini Umbrella (2 Locations)	28.84	27.97	27.12	26.52
A00273	Super Flat Mini Umbrella (3 Locations)	30.87	29.95	29.02	28.39

Setup fee: **\$29.81(G)**

Pricing includes brokerage and duties.

Stock fabric colors with full-color artwork.
Minimum order quantity of 12.

CAD MSRP (C)

Closed Product Size	Arc	Finished Graphic Size	Product Wt.	Media
1.5"W x 10.5"H x 1.5"D	43"	view online template	9 lbs. (qty 12)	rPET polyester

Production Lead Time: 5 days from final proof approval



Shown in indigo with full-color imprint (2 locations)



Folds down to 10.5".

Stock Super Flat Mini Umbrella Colors

- Indigo PMS 295
- Black

PMS colors are for reference only and may vary slightly from actual color.

PRICES SHOWN IN CAD AND ARE SUBJECT TO CHANGE.

Pricing accounts for brokerage and duties. 10% Flat Shipping Rate is applied at checkout. No setup fee on orders placed via our website. Visit our website for current pricing.





SPIN 'N WIN PRIZE WHEEL



Give your next trade show or event a creative spin.

- Powder-coated steel legs
- A plastic clicker makes a ticking sound as the wheel spins
- Central disc panel attaches magnetically and remains stationary when the wheel spins
- Wheel has a 31.5" dia.
- All graphic panels can be custom printed with your design
- Includes twelve prize panels and central disc panel

Spin 'N Win Prize Wheel

Item #	Description	1	2-5	6-11	12-24
280104	Kit	1092.46	1070.85	1059.67	1038.06

Setup fee: \$29.81(G)

Pricing includes brokerage and duties.

Kit Includes: Hardware, Graphic Panels and Soft Carry Case

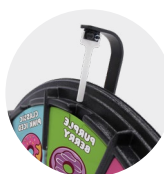
CAD MSRP (C)

Product Size	Finished Graphic Size	Product Wt.	Media
31.25"W x 40.75"-72"H x 16"-31"D	view online template	16.5 lbs.	Titan™ no-curl laminated media

Production Lead Time: 2 days from final proof approval



Graphic panels and central disc panel can be printed using a desktop printer.



Loud clicker attracts attention at noisy events.

Need a Tabletop Game?

Simply remove the leg extensions to transform this prize wheel into a game suitable for tabletop use.



BAG TOSS GAME



Toss some friendly competition into your next event with this customizable game.

- Game includes two game boards and eight bean bags
- Two game boards clasp together into a single unit that can be easily transported using the convenient carry handle
- Durable plastic construction prevents rust and splinters
- Included rope acts as a distance regulator
- Hinged legs fold out to prop the game boards up at an angle
- 90-day warranty on graphic panels

Bag Toss Game

Item #	Description	1	2-5	6-11	12-24
280310	Kit	460.16	451.22	446.37	437.06

Setup fee: \$29.81(G)

Pricing includes brokerage and duties.

Kit Includes: Hardware, 8 Unimprinted Bean Bags and 2 Graphic Panels

CAD MSRP (C)

Product Size	Finished Graphic Size	Product Wt.	Media
folded: 21.5"W x 2.75"H x 33.125"D (1) open: 21.5"W x 10.5"H x 32.75"D	view online template	21.5 lbs.	Titan™ no-curl laminated media

Production Lead Time: 3 days from final proof approval

Add-Ons

Attach the Bag Toss Buddy to your Bag Toss (sold separately) for access to a bag holder, score keeper and drink holder.

Personalize your bags with custom printed bean bags.

See website for details.



Item #280315
Custom Printed Bean Bags



Item #280314
Bag Toss Buddy



Built-in score keepers slide up and down the edges of the board.



Bean bags can be stored inside plastic molded pockets so they don't get left behind.

PRICES SHOWN IN CAD AND ARE SUBJECT TO CHANGE.

Pricing accounts for brokerage and duties. 10% Flat Shipping Rate is applied at checkout. No setup fee on orders placed via our website. Visit our website for current pricing.



PICKLEBALL SET WITH NET



Everything you need to start the game.

- Game includes two paddles, two outdoor balls, steel poles and net
- Paddles are constructed with wood; net is 12"W x 35"H
- Available with full-color decal(s) on paddles; option for a double-sided imprint on net
- Decals are permanent and cannot be swapped or repositioned
- Assembly required

Pickleball Set with Net

Item #	Description	1	2-5	6-11	12-24
AG0181	Single-Sided Paddle Kit	258.28	245.17	232.81	213.87
AG0182	Double-Sided Paddle Kit	274.68	260.67	247.56	227.44

Setup fee: \$29.81(G)

Pricing includes brokerage and duties.

Kit Includes: 2 Single- or Double-Sided Decaled Paddles, 2 Outdoor Pickleball Balls, Net and Carry Case CAD MSRP (C)

Pickleball Set with Imprinted Net

Item #	Description	1	2-5	6-11	12-24
AG0183	Single-Sided Paddle Kit	266.48	252.93	240.11	220.58
AG0184	Double-Sided Paddle Kit	282.87	268.58	255.01	234.14

Setup fee: \$29.81(G)

Pricing includes brokerage and duties.

Kit Includes: 2 Single- or Double-Sided Decaled Paddles, 2 Outdoor Pickleball Balls, Imprinted Net and Carry Case CAD MSRP (C)

Product Size	Finished Graphic Size	Product Wt.	Media (Decal)
paddles: 8"W x 16"H x 3"D net: 12"W x 35"H	view online template	15 lbs.	decal vinyl film

Production Lead Time: 7 days from final proof approval



Want an imprinted carry case?

Pickleball Set with Net Plus and Pickleball Set with Imprinted Net Plus options are available online.



Pickleball Set with Imprinted Net (Single-Sided)

WOOD CORNHOLE



This classic game is perfect for tailgates and company picnics.

- Game includes two game boards and eight unimprinted or dye sublimated bean bags
- Features regulation 6" dia. holes
- Vibrant full-color decals on game board
- Decals are permanent and cannot be swapped or repositioned
- Constructed with premium-grade plywood and solid wood legs
- Dye sublimation is not eligible for Rush Service

Wood Cornhole

Item #	Description	1	2-5	6-11	12-24
AG0158	Unimprinted Bean Bags Kit	480.28	467.99	458.67	448.24
AG0154	Dye Sublimated Bean Bags Kit	620.01	603.98	591.69	578.65

Setup fee: \$29.81(G)

Pricing includes brokerage and duties.

Kit Includes: Game with Applied Graphic Decals, 8 Unimprinted or Dye Sublimated Bean Bags (4 of Each Design) and Carry Case CAD MSRP (C)

Wood Cornhole Plus

Item #	Description	1	2-5	6-11	12-24
AG0159	Unimprinted Bean Bags Kit	483.63	470.97	461.65	451.22
AG0155	Dye Sublimated Bean Bags Kit	623.36	607.34	595.04	581.63

Setup fee: \$29.81(G)

Pricing includes brokerage and duties.

Kit Includes: Game with Applied Graphic Decals, 8 Unimprinted or Dye Sublimated Bean Bags (4 of Each Design) and Carry Case CAD MSRP (C)

Product Size	Finished Graphic Size	Product Wt.	Media (Decal)
26"W x 6"H x 49"D	view online template	46 lbs.	decal vinyl film

Production Lead Time: 7 days from final proof approval



Wood Cornhole Plus has an imprinted carry case.



Unimprinted bean bags are available in combinations of white, red, royal, navy and black (four per color).

PRICES SHOWN IN CAD AND ARE SUBJECT TO CHANGE.

Pricing accounts for brokerage and duties. 10% Flat Shipping Rate is applied at checkout. No setup fee on orders placed via our website. Visit our website for current pricing.





Features comfort grip steel handles.



Holds up to 85 standard 12 oz. cans with ice.

Built-in bottle opener.



Shown in metallic gray with wrap graphic and lid decal

SASQUATCH™ 54QT COOLER



Designed to impress, our steel-belted cooler is made with durability to keep up with any adventure.

- Tall design holds 2 liter bottles upright to help prevent spills
- Leak-resistant channel drain
- Constructed with steel
- Rust-resistant stainless steel lid latch and hardware
- Available in a variety of full-color imprint(s), decal(s) and wrap graphic
- Decals are permanent and cannot be swapped or repositioned
- Wrap graphic is not eligible for Rush Service

Sasquatch™ 54QT Cooler

Item #	Description	1	2-5	6-11	12-24
AC0221	Front Imprint	524.99	511.58	501.15	489.97
AC0222	Front and Lid Imprints	538.41	524.25	513.82	502.26
AC0223	Wrap Graphic with Lid Decal	590.57	575.29	563.74	551.08
AC0227	Wrap Graphic with Lid Decals	617.40	601.38	589.45	576.04

Setup fee: \$29.81(G)

Pricing includes brokerage and duties.

CAD MSRP (C)

Product Size	Finished Graphic Size	Product Wt.	Media (Wrap / Decal)
22.5"W x 16.5"H x 14.5"D	view online template	23 lbs.	wrap vinyl / decal vinyl film

Production Lead Time: 7 days from final proof approval

Stock Sasquatch™ 54QT Cooler Colors

- White
- Azure PMS 286
- Metallic Gray PMS 877
- Crimson PMS 186
- Indigo PMS 295
- Black

PMS colors are for reference only and may vary slightly from actual color.

IGLOO® 60QT ROLLING COOLER



This large signature cube-shaped cooler brings impressive capacity and portability wherever you go.

- Features two rugged wheels and a locking, telescoping handle
- Constructed with durable plastic
- Molded-in side handles for easy lifting.
- Available with full-color decals
- Decals are permanent and cannot be swapped or repositioned

IGLOO® 60QT Rolling Cooler

Item #	Description	1	2-5	6-11	12-24
AC0131	Front, Side and Lid Decals	231.01	222.66	216.85	212.23

Setup fee: \$29.81(G)

Pricing includes brokerage and duties.

CAD MSRP (C)

Product Size	Finished Graphic Size	Product Wt.	Media (Decal)
20"W x 22"H x 18"D	view online template	14 lbs.	hi tac decal vinyl film

Production Lead Time: 7 days from final proof approval

Stock IGLOO® 60QT Rolling Cooler Colors

- White
- Azure PMS 286
- Crimson PMS 186

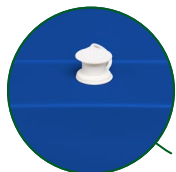
PMS colors are for reference only and may vary slightly from actual color.



Telescoping handle for quick and simple transportation.



Holds up to 94 standard 12 oz. cans with ice.



Features a capped drainage hole.



Shown in white

PRICES SHOWN IN CAD AND ARE SUBJECT TO CHANGE.

Pricing accounts for brokerage and duties. 10% Flat Shipping Rate is applied at checkout. No setup fee on orders placed via our website. Visit our website for current pricing.

ROCK THE BOAT® BAG



Built tough and ready to carry your brand wherever it goes.

- Available with vibrant full-color imprint or embroidery
- Minimum order quantity of six for full-color imprint; 12 for embroidery
- Embroidery is not eligible for Rush Service

Full-Color Front Imprint

Item #	Description	6-11	12-24	25-49	50-149
AB0041	Rock the Boat® Bag	27.97	26.28	24.78	23.13

Setup fee: \$29.81(G) **Pricing includes brokerage and duties.**
Stock fabric colors with full-color artwork. Minimum order quantity of 6. CAD MSRP (C)

Embroidered

Item #	Description	12-24	25-49	50-74	75-99
ABE041	Rock the Boat® Bag	38.18	36.47	34.94	33.41

Setup (includes embroidery tape) fee: \$151.80(G) **Pricing includes brokerage and duties.**
Stock fabric colors with embroidery (max 6 thread colors). Minimum order quantity of 12. CAD MSRP (C)

Product Size	Handle Drop	Finished Graphic Size	Product Wt. (Qty 6 / 12)	Media
20"W x 12"H x 7.5"D	9"	view online template	7.5 lbs. / 15 lbs.	15 oz. cotton canvas

Production Lead Time: 5 days for full-color imprint / 10 days for embroidery from final proof approval

Handles and trim are color-matched for a cohesive look.

Constructed of 15 oz. natural cotton canvas with expandable zipper closure.



Includes a front exterior pocket.



Shown in natural/maroon with full-color imprint

Stock Rock the Boat® Bag Colors

- Azure PMS 286
- Indigo PMS 295
- Black
- Natural PMS 9060 / Pumpkin PMS 165
- Natural PMS 9060 / Crimson PMS 186
- Natural PMS 9060 / Ruby PMS 201
- Natural PMS 9060 / Maroon PMS 202
- Natural PMS 9060 / Azure PMS 286
- Natural PMS 9060 / Indigo PMS 295
- Natural PMS 9060 / Spruce PMS 3435
- Natural PMS 9060 / Black

PMS colors are for reference only and may vary slightly from actual color.

TRAVELER BAG



This bag combines durability and smart functionality to keep up with every adventure.

- Constructed of rPET polyester with a neutral gray recycled polyester lining
- Attaches to luggage with luggage sleeve for easy travel
- Available with vibrant full-color imprint or embroidery
- Minimum order quantity of six for full-color imprint; 12 for embroidery
- Embroidery is not eligible for Rush Service

Full-Color Front Imprint

Item #	Description	6-11	12-24	25-49	50-149
AB0151	Traveler Bag	118.86	111.63	105.29	98.30

Setup fee: \$29.81(G) **Pricing includes brokerage and duties.**
Stock fabric colors with full-color artwork. Minimum order quantity of 6. CAD MSRP (C)

Embroidered

Item #	Description	12-24	25-49	50-74	75-99
ABE151	Traveler Bag	129.07	123.26	118.11	112.97

Setup (includes embroidery tape) fee: \$151.80(G) **Pricing includes brokerage and duties.**
Stock fabric colors with embroidery (max 6 thread colors). Minimum order quantity of 12. CAD MSRP (C)

Product Size	Handle Drop	Finished Graphic Size	Product Wt. (Qty 6 / 12)	Media
25"W x 16"H x 8.5"D	8"	view online template	12 lbs. / 24 lbs.	rPET polyester

Production Lead Time: 5 days for full-color imprint / 10 days for embroidery from final proof approval

Features a removable and adjustable shoulder strap with swivel hooks.



Shown in black with embroidery

Features a front exterior pocket.



Expandable zipper top with interior pockets allows for additional packing space.



Padded bottom compartment keeps footwear separate.

Stock Traveler Bag Colors

- Indigo PMS 295
- Black

PMS colors are for reference only and may vary slightly from actual color.

PRICES SHOWN IN CAD AND ARE SUBJECT TO CHANGE.

Pricing accounts for brokerage and duties. 10% Flat Shipping Rate is applied at checkout. No setup fee on orders placed via our website (excludes embroidery). Visit our website for current pricing.

FLOOR DISPLAYS

when choosing a floor display have you considered...

- What is the size of your space?
- How will this display be transported?
- Will you be changing out your look and message?



Compatible displays can be hinged together using the included EuroFit™ Connector, item #255122. US Patent #9637963



EUROFIT™ WALLS



The ever-popular EuroFit™ line offers many elegant and versatile display solutions.

- Artwork is vibrantly dye sublimated on recycled polyester knit
- Hinge together separate EuroFit™ displays with the EuroFit™ Connector
- Create modular layouts with limitless possibilities

72"H EuroFit™ Straight Wall

Item #	Description	1	2-5	6-11	12-24
256203	2'W Kit	433.71	420.67	407.62	394.96
256212	3'W Kit	573.06	542.51	517.17	492.20

Setup fee: \$29.81(G)

Pricing includes brokerage and duties.

Kit Includes: Hardware, Graphic Cover, EuroFit™ Connector and Soft Carry Case

CAD MSRP (C)

Description	Product Size	Finished Graphic Size	Product Wt.	Media
2'W	24.5"W x 72"H x 19"D	view online template	7.5 lbs.	recycled polyester knit
3'W	36.5"W x 72"H x 19"D	view online template	8.25 lbs.	recycled polyester knit

90"H EuroFit™ Straight Wall

Item #	Description	1	2-5	6-11	12-24
256215	3'W Kit	692.29	671.43	650.56	629.69
256233	5'W Kit	1043.28	1011.98	980.68	949.38
255180	8'W Kit	1584.30	1536.60	1489.65	1441.96
256251	10'W Kit	1812.33	1764.63	1728.86	1690.11
256427	20'W Kit	3509.89	3456.24	3354.89	3310.18

Setup fee: \$29.81(G)

Pricing includes brokerage and duties.

Kit Includes: Hardware, Graphic Cover, EuroFit™ Connector and Soft Carry Case

CAD MSRP (C)

20' Display Includes: Hardware, Graphic Cover, 2 EuroFit™ Connectors and 2 Soft Carry Cases

Description	Product Size	Finished Graphic Size	Product Wt.	Media
3'W	36.5"W x 91.25"H x 19"D	view online template	10.3 lbs.	recycled polyester knit
5'W	60.5"W x 91.25"H x 19"D	view online template	12.6 lbs.	recycled polyester knit
8'W	96.5"W x 91.25"H x 19"D	view online template	18 lbs.	recycled polyester knit
10'W	115.5"W x 91.25"H x 19"D	view online template	21.25 lbs.	recycled polyester knit
20'W	231"W x 91.25"H x 19"D	view online template	42.75 lbs.	recycled polyester knit

Production Lead Time: 4 days from final proof approval



Get a green screen compatible backdrop printed as PMS 354C; available online.

PRICES SHOWN IN CAD AND ARE SUBJECT TO CHANGE.

Pricing accounts for brokerage and duties. 10% Flat Shipping Rate is applied at checkout. No setup fee on orders placed via our website. Visit our website for current pricing.

SPLASH DISPLAY



This pop-up display transforms from a compact unit to an impressive backdrop in minutes.

- Graphic panels are available in recycled polyester knit and block-out fabric
- Hook-and-loop fasteners make graphic panel installation simple
- Aluminum frame with nylon plastic hubs
- US Patent #9214104

8' Straight Splash

Item #	Description	1	2-5	6-11	12-24
341004	Recycled Polyester Knit Face Kit	1904.73	1865.98	1828.72	1809.35
342208	Block-Out Fabric Face Kit	2061.22	2020.98	1979.25	1958.39
341005	Recycled Polyester Knit Wrap Kit	2344.40	2283.29	2235.60	2183.44
342209	Block-Out Fabric Wrap Kit	2475.55	2409.98	2344.40	2287.76

Setup fee: \$29.81(G) Pricing includes brokerage and duties.

Kit Includes: Frame, Graphic Panel and Soft Carry Case CAD MSRP (C)

Product Size 90"W x 89.5"H x 12.25"D
Finished Graphic Size view online template
Product Wt. 19.25 - 24.25 lbs.

10' Straight Splash

Item #	Description	1	2-5	6-11	12-24
341008	Recycled Polyester Knit Face Kit	2336.95	2263.92	2216.22	2167.04
342212	Block-Out Fabric Face Kit	2508.34	2444.26	2378.68	2323.53
341009	Recycled Polyester Knit Wrap Kit	2666.33	2612.67	2559.02	2532.19
342213	Block-Out Fabric Wrap Kit	2815.37	2758.73	2702.10	2673.78

Setup fee: \$29.81(G) Pricing includes brokerage and duties.

Kit Includes: Frame, Graphic Panel and Soft Carry Case CAD MSRP (C)

Product Size 119"W x 89.5"H x 12.25"D
Finished Graphic Size view online template
Product Wt. 23.75 - 31 lbs.

Production Lead Time: 4 days from final proof approval



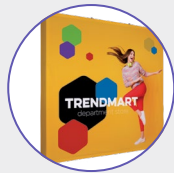
8' with wrap graphic panel

10' with face graphic panel

Kit Options



Face Graphic Kit
Graphic panel covers the front of the frame.

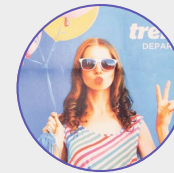


Wrap Graphic Kit
Graphic panel covers the front and sides, extending to the first column of plastic hubs on the back of the frame. Back of the frame is not covered.

Media Options



Block-Out Fabric
Block-out fabric is designed to prevent light from showing through the display. It is a good option for brightly lit areas.



Recycled Polyester Knit
Sustainable recycled polyester knit is made with fibers recycled from plastic bottles.

BRAVO EXPANDING DISPLAY



The Bravo is the most durable and dependable expanding display available.

- Frame poles are adjustable to accommodate a variety of banner sizes (see website for details)
- Reinforced joints keep the banner taut over an extended period of time
- Graphics are dye sublimated on recycled polyester knit
- 100% recycled media is made with fibers recycled from plastic bottles
- Small feet for a discreet footprint
- Custom banner sizes available (call for quote; restrictions may apply)

Bravo Expanding Display

Item #	Description	1	2-5	6-11	12-24
254150	8' Single-Sided Kit	1097.68	1069.36	1047.75	1023.90
254151	10' Single-Sided Kit	1330.18	1295.16	1269.82	1240.76

Setup fee: \$29.81(G) Pricing includes brokerage and duties.

Kit Includes: Hardware, Graphic and Soft Carry Case CAD MSRP (C)

Description 8' 94"W x 94.25"H x 14"D
Product Size 10' 118"W x 94.25"H x 14"D
Finished Graphic Size view online template
Product Wt. 20.2 lbs.
Media recycled polyester knit
 recycled polyester knit

Production Lead Time: 4 days from final proof approval



The vertical clamping system lets you adjust height.



Durable rounded corners.

PRICES SHOWN IN CAD AND ARE SUBJECT TO CHANGE.

Pricing accounts for brokerage and duties. 10% Flat Shipping Rate is applied at checkout. No setup fee on orders placed via our website. Visit our website for current pricing.





12-Quad Classic

DELUXE GEOMETRIX DISPLAY



A strong, durable frame supports multiple graphic panels and shelves so you have countless options for setting up a creative display.

- Setup and teardown can be done in seconds
- Artwork is dye sublimated on polyester double knit
- Aluminum frame with nylon plastic hubs

Deluxe GeoMetrix Display

US Patent #9214104

Item #	Description	1	2-5	6-11	12-24
342006	9-Quad Classic Kit	2831.76	2746.81	2690.17	2605.22
342000	12-Quad Classic Kit	3344.46	3277.39	3210.32	3177.53

Setup fee: \$29.81(G)

Pricing includes brokerage and duties.

Kit Includes: Frame, Graphic Panels, 2 Internal Shelves and Soft Carry Case
 Shelves do not fit in provided soft carry case.
 See website for shelf soft carry case. CAD MSRP (C)

Description	Product Size	Finished Graphic Size	Product Wt.	Media
9-quad classic	90"W x 89.5"H x 13"D	view online template	24 lbs.	polyester double knit
12-quad classic	118"W x 89.5"H x 13"D	view online template	30.5 lbs.	polyester double knit

Production Lead Time: 4 days from final proof approval

JOURNEY MODULAR DISPLAY SYSTEM



Pack up your SEG and go with this conveniently foldable frame.

- Modular design allows you to expand and modify into various configurations
- Artwork is dye sublimated on recycled polyester knit
- 100% recycled media is made with fibers recycled from plastic bottles
- Includes two graphic panels for a double-sided display
- 1.625" frame depth
- Tool-free assembly

Journey Full Wall

Item #	Description	1	2-5	6-11	12-24
254860	3'W Kit	765.32	734.39	703.84	673.29
254869	6'W Kit	1390.54	1362.23	1276.53	1248.96
254872	8'W Kit	1566.41	1536.60	1438.98	1409.17
254875	10'W Kit	2459.16	2398.05	2259.45	2198.34

Setup fee: \$29.81(G)

Pricing includes brokerage and duties.

3'-5'W Kit Includes: Hardware, 2 Graphic Panels and Soft Carry Case
 6'-10'W Kit Includes: Hardware, 2 Graphic Panels, 180° Connector Set and 2 Soft Carry Cases CAD MSRP (C)

Description	Product Size	Finished Graphic Size	Product Wt.	Media
3'W	36.125"W x 90.625"H x 15.125"D	view online template	14 lbs.	recycled polyester knit
6'W	72"W x 90.625"H x 15.125"D	view online template	26.4 lbs.	recycled polyester knit
8'W	96"W x 90.625"H x 15.125"D	view online template	28.4 lbs.	recycled polyester knit
10'W	120"W x 90.625"H x 15.125"D	view online template	31.6 lbs.	recycled polyester knit

Production Lead Time: 4 days from final proof approval

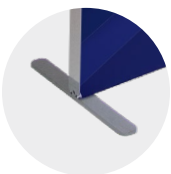


10'

8'

6'

3'



Slim feet stabilize the display and have a sleek look.



The lightweight aluminum frame folds for portability.

Aluminum frame can be recycled after use.



Combine walls with other Journey components to craft a highly adaptable and visually striking display (sold separately).

PRICES SHOWN IN CAD AND ARE SUBJECT TO CHANGE.

Pricing accounts for brokerage and duties. 10% Flat Shipping Rate is applied at checkout. No setup fee on orders placed via our website. Visit our website for current pricing.



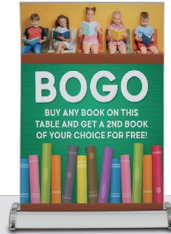
MINI TABLETOP DISPLAYS

These displays fit into small areas, making them perfect for tables and countertops.

- Lightweight and portable
- Warranties range between six months and one year (see website for details)
- Kit contents vary (see website for details)



Deluxe Mini



Large Mini Promo



Economy



Mini X



EuroFit™ Mini

Mini Tabletop Displays

Item #	Description	1	2-5	6-11	12-24
262014	Deluxe Mini Kit	125.12	120.13	115.06	110.07
210242	Large Mini Promo Kit	108.27	103.96	99.64	95.32
261130	24" Tabletop Economy No-Curl Hybrid Media Kit	268.58	257.84	244.43	231.01
262160	24" Tabletop Economy No-Curl Opaque Fabric Kit	268.58	257.84	244.43	231.01
280370	EuroFit™ Mini Kit	162.45	155.90	149.48	142.93
210032	Mini X Banner Display Kit	62.29	59.81	57.33	54.81

Setup fee: \$29.81(G)

Pricing includes brokerage and duties.

CAD MSRP (C)

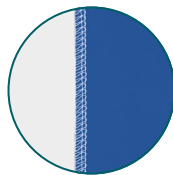
Production Lead Time: 2-4 days from final proof approval

MICRO GEOMETRIX DISPLAY

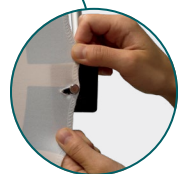


Create a variety of multidimensional displays in seconds with the Micro GeoMetrix display.

- Lightweight aluminum frame with plastic hubs
- Artwork is dye sublimated on polyester double knit
- Pegs hold up to three panels each



Graphic panels are finished with white stitching.



Buttonholes are reinforced with white stitching to prevent tearing.

Micro GeoMetrix Classic

Item #	Description	1	2-5	6-11	12-24
337207	Kit	854.74	820.47	786.19	751.91

Setup fee: \$29.81(G)

Pricing includes brokerage and duties.

CAD MSRP (C)

Kit Includes: Nine-Quad Square Frame, 5 Graphic Panels and Soft Carry Case

Product Size	Finished Graphic Size	Product Wt.	Media
46"W x 46.75"H x 9.62"D	view online template	9.25 lbs.	polyester double knit

Production Lead Time: 4 days from final proof approval



Shelf design ensures a better fit for faster, easier installation.

Add-On

Micro GeoMetrix Shelf

Item #	Description	1	2-5	6-11	12-24
338069	Internal Clear Shelf	75.20	72.22	69.19	66.18

Pricing includes brokerage and duties.

Each shelf supports up to 5 lbs. Shelf size 14.5"W x 9.25"D. Compatible with frames equipped with locking arms only.

CAD MSRP (C)



PRICES SHOWN IN CAD AND ARE SUBJECT TO CHANGE.
Pricing accounts for brokerage and duties. 10% Flat Shipping Rate is applied at checkout. No setup fee on orders placed via our website. Visit our website for current pricing.





Countertop folds in half for convenient storage.

COUNTERPOP



Combining the features of a counter and a pop-up display, the CounterPop is truly a multifunctional display.

- Available in three widths
- Artwork is dye sublimated on recycled polyester knit
- 100% recycled media is made with fibers recycled from plastic bottles
- Hook-and-loop fasteners make it easy to install graphic panels
- Countertop supports up to 30 lbs.; internal shelves support up to 10 lbs.

CounterPop

Item #	Description	1	2-5	6-11	12-24
256800	26" Kit	900.20	873.37	845.80	818.97
257055	42" Kit	1038.81	1007.51	976.96	945.66
256803	56" Kit	1164.75	1129.72	1094.70	1059.67

Setup fee: \$29.81(G)

Pricing includes brokerage and duties.

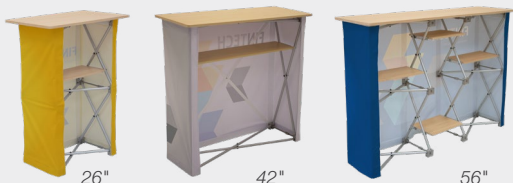
Kit Includes: Hardware, Graphic Panel and Soft Carry Case

CAD MSRP (C)

Description	Product Size	Finished Graphic Size	Product Wt.	Media
26"	26"W x 40"H x 15.75"D	view online template	17 lbs.	recycled polyester knit
42"	41.75"W x 40"H x 15.75"D	view online template	22.25 lbs.	recycled polyester knit
56"	55.875"W x 40"H x 15.75"D	view online template	28 lbs.	recycled polyester knit

Production Lead Time: 4 days from final proof approval

Back View



MDF countertop and internal shelf with woodgrain laminate.



Graphic wrap is installed into the chair frame.

RETRO WEBBING CHAIR



Discover the perfect blend of retro style and modern comfort.

- Supports up to 250 lbs.
- Webbing and graphic wrap are made from polyester
- Powder-coated steel frame with solid wood armrests
- Folds flat for easy storage and transport
- Vibrant full-color imprint

Retro Webbing Chair

Item #	Description	1	2-5	6-11	12-24
ACH071	Front Imprint	193.75	183.91	174.68	160.37

Setup fee: \$29.81(G)

Pricing includes brokerage and duties.

Stock fabric colors with full-color artwork.

CAD MSRP (C)

Product Size	Finished Graphic Size	Product Wt.	Media
22"W x 33.5"H x 16"D	view online template	8.5 lbs.	polyester

Production Lead Time: 7 days from final proof approval



Chair features one cupholder.

Stock Retro Webbing Chair Colors

- Crimson PMS 186
- Azure PMS 286
- Black

PMS colors are for reference only and may vary slightly from actual color.

PRICES SHOWN IN CAD AND ARE SUBJECT TO CHANGE.

Pricing accounts for brokerage and duties. 10% Flat Shipping Rate is applied at checkout. No setup fee on orders placed via our website. Visit our website for current pricing.

BLANKETS



Add extra coziness to any room with these snuggly soft blankets.

- Sherpa and Fleece artwork is dye sublimated on soft fleece fabric
- Single-sided
- Fleece unimprinted side is white; Sherpa unimprinted side is ivory
- Machine wash on cold gentle cycle and tumble dry, no heat

Fleece Blanket

Item #	Description	Product Wt.	1	2-5	6-11	12-24
281117	50" x 60"	1.3 lbs.	80.33	77.94	75.49	73.10
281118	60" x 80"	2.1 lbs.	110.44	107.09	103.80	100.45

Setup fee: \$29.81(G)

Pricing includes brokerage and duties.
CAD MSRP (C)

Sherpa Blanket

Item #	Description	Product Wt.	1	2-5	6-11	12-24
281111	50" x 60"	2 lbs.	100.45	92.40	86.37	80.33
281112	60" x 80"	3.2 lbs.	130.56	120.05	112.22	104.40

Setup fee: \$29.81(G)

Pricing includes brokerage and duties.
CAD MSRP (C)

Production Lead Time: 3 days from final proof approval



Sherpa blanket is finished with a whipped edge.



Fleece blanket is finished with a hemmed edge.

INDOOR PILLOWS



Instantly revitalize and add comfort to any space.

- Artwork is printed on durable textured polyester fabric
- Single- and double-sided options available
- Vacuum sealed poly-fill pillow insert included
- Zipper closure
- Pillow cover is machine-washable; wash on cold gentle cycle and tumble dry, no heat
- Assembly required; insert pillow into cover

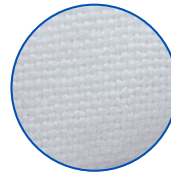
Indoor Pillows

Item #	Description	Product Wt.	1	2-5	6-11	12-24
281200	16" x 16" Single-Sided Kit	1.2 lbs.	70.27	68.17	66.06	63.95
281201	16" x 16" Double-Sided Kit	1.2 lbs.	80.33	77.94	75.49	73.10
281202	18" x 18" Single-Sided Kit	1.4 lbs.	80.33	77.94	75.49	73.10
281203	18" x 18" Double-Sided Kit	1.4 lbs.	90.32	87.63	84.88	82.19

Setup fee: \$29.81(G)

Kit Includes: Pillow Graphic Cover and Separate Vacuum Sealed Poly-Fil Insert
CAD MSRP (C)

Production Lead Time: 2 days from final proof approval



Textured fabric gives style and depth to the pillow cover.



16" X 16"



18" X 18"



Pillows feature a zipper closure.



The reverse side of single-sided pillows is white.

ALUMINUM PRINTS



Make your art shine with a sleek and modern aluminum print.

- Scratch-resistant for long-term use
- Print is single-sided with a white base coat that makes colors pop
- No assembly required

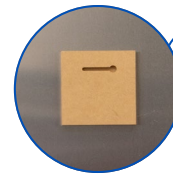
Aluminum Prints with Shadow Mount

Item #	Description	Product Wt.	1	2-5	6-11	12-24
264225	10" x 20"	0.95 lb.	67.25	65.23	63.20	61.19
264211	16" x 16"	0.9 lb.	91.88	89.12	86.37	83.61
264219	24" x 36"	4 lbs.	412.84	400.54	387.88	375.58

Setup fee: \$29.81(G)

Pricing includes brokerage and duties.
CAD MSRP (C)

Production Lead Time: 2 days from final proof approval



Hidden shadow mount hardware lets you hang your art on the wall like a picture frame.



Finished with rounded corners.

16" X 16"

PRICES SHOWN IN CAD AND ARE SUBJECT TO CHANGE.
Pricing accounts for brokerage and duties. 10% Flat Shipping Rate is applied at checkout. No setup fee on orders placed via our website. Visit our website for current pricing.





OUR COMMITMENT TO SUSTAINABLE SOLUTIONS



HERE ARE EXAMPLES OF OUR ONGOING EFFORTS:

- Working to ensure adherence to our Supplier Code of Conduct throughout our supply chain
- Continually assessing product packaging options with the goal of minimizing environmental impact and packaging waste
- Ensuring the availability of product options with a lower environmental impact
- Continually assessing waste streams to identify recycling and landfill diversion options

Discover our sustainable products!



This icon under a product name means sustainable options are available.